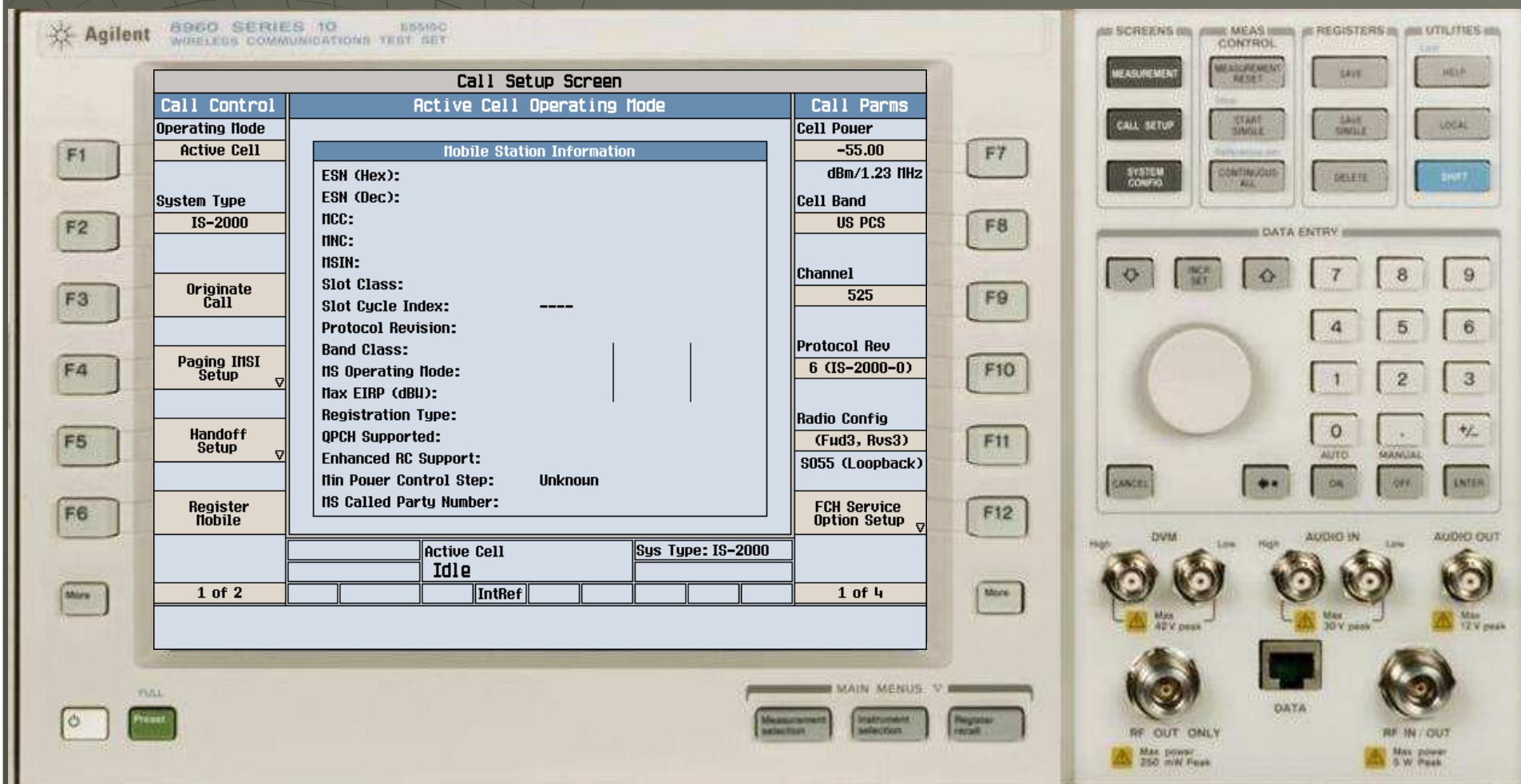




8960 CDMA self calibration

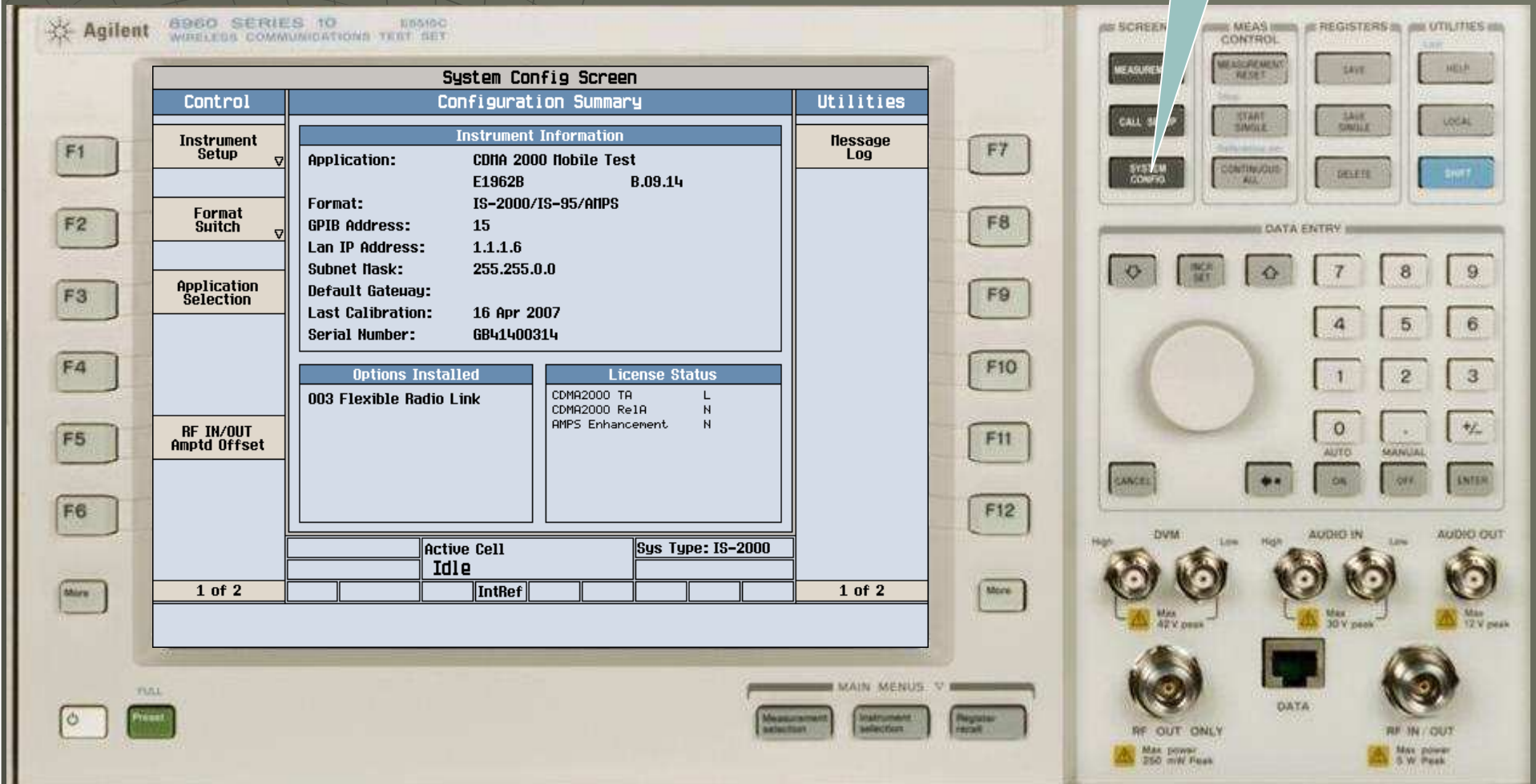
Agilent SSU China
Yun JianXin

- ◆ E1962B B.09.14启动界面，如果仪器以其他TA启动，本流程只部分适用。



◆ 按下“System Config”按钮

System Config



The image shows the System Config Screen of an Agilent 8960 Series 10 Wireless Communications Test Set. The screen is divided into several sections: Control, Configuration Summary, Utilities, and Message Log. The Configuration Summary section is further divided into Instrument Information, Options Installed, and License Status. The Instrument Information section displays the following details:

Instrument Information	
Application:	CDMA 2000 Mobile Test
Format:	E1962B B.09.14
GPIB Address:	15
Lan IP Address:	1.1.1.6
Subnet Mask:	255.255.0.0
Default Gateway:	
Last Calibration:	16 Apr 2007
Serial Number:	GB41400314

The Options Installed section shows:

Options Installed	License Status
003 Flexible Radio Link	CDMA2000 TR L
	CDMA2000 Re1A N
	AMPS Enhancement N

The License Status section shows:

License Status
CDMA2000 TR L
CDMA2000 Re1A N
AMPS Enhancement N

The Active Cell section shows:

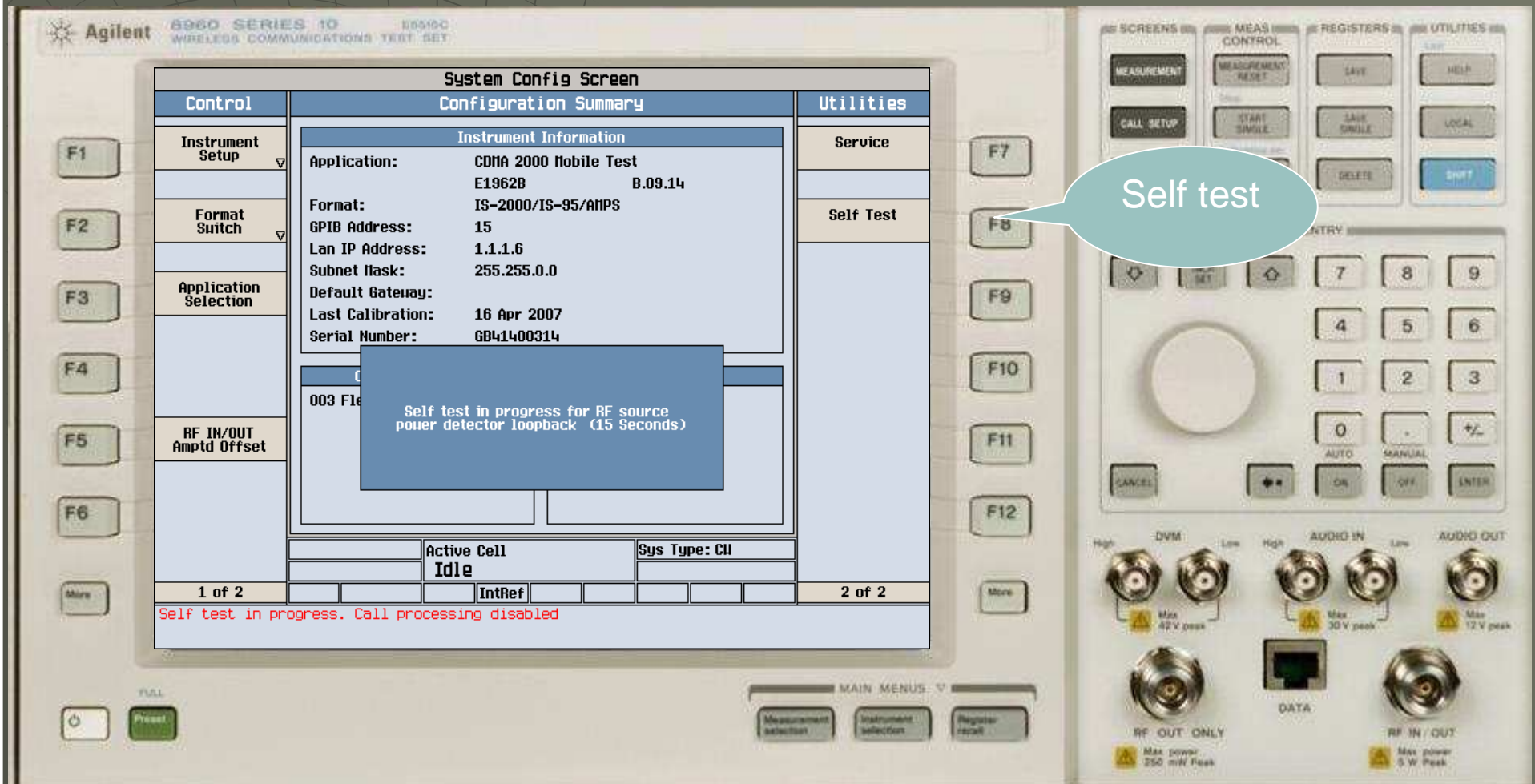
Active Cell	Sys Type: IS-2000
Idle	

The screen also displays "1 of 2" in the bottom left and right corners, and "IntRef" in the bottom center. The physical interface includes function keys (F1-F12), a numeric keypad, and various connectors (DVM, AUDIO IN, AUDIO OUT, RF OUT ONLY, DATA, RF IN / OUT).

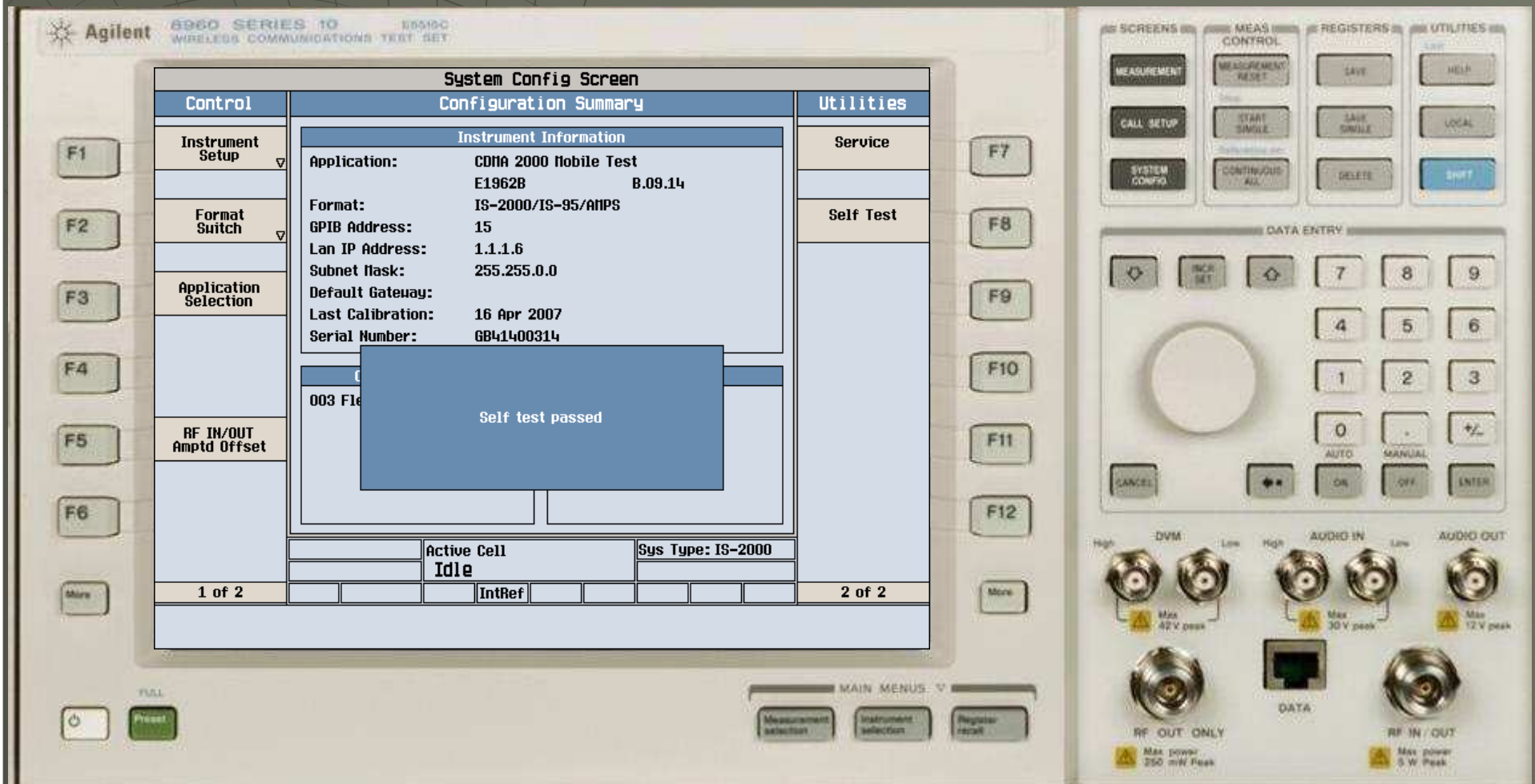
◆ 按下“More”按钮



◆ 按下F8，选择“Self Test”

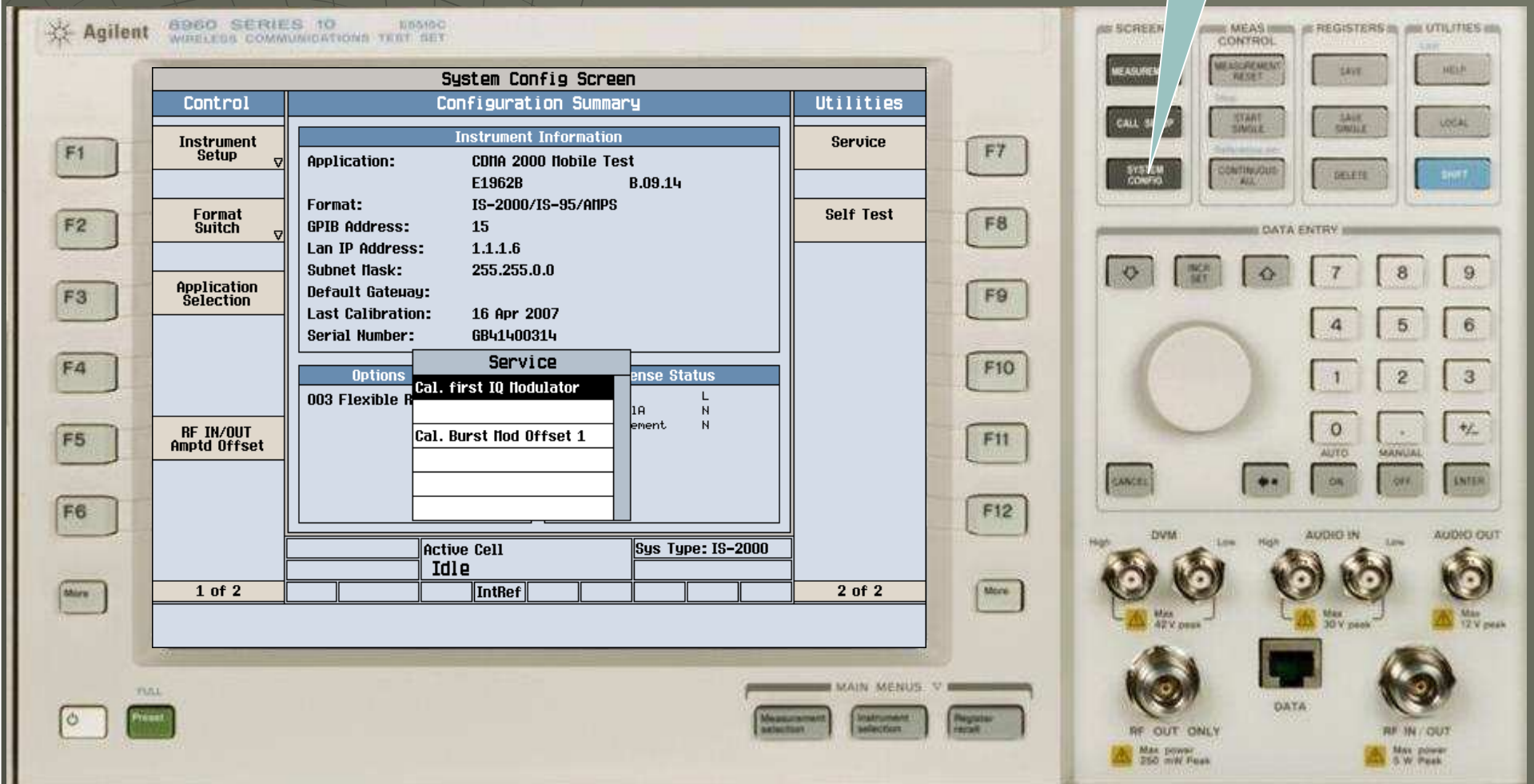


◆ Self test 完成

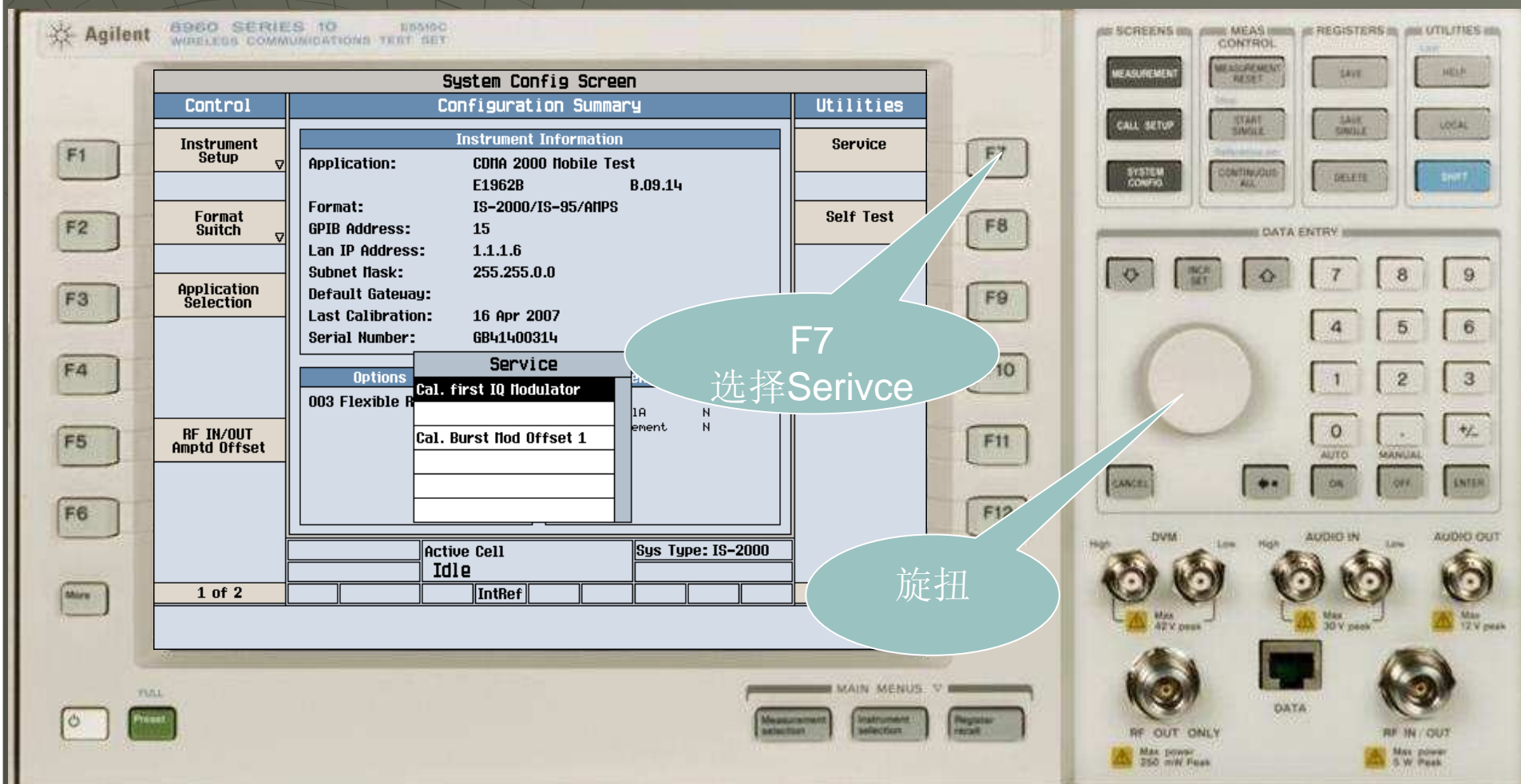


再次按“System Config”按钮

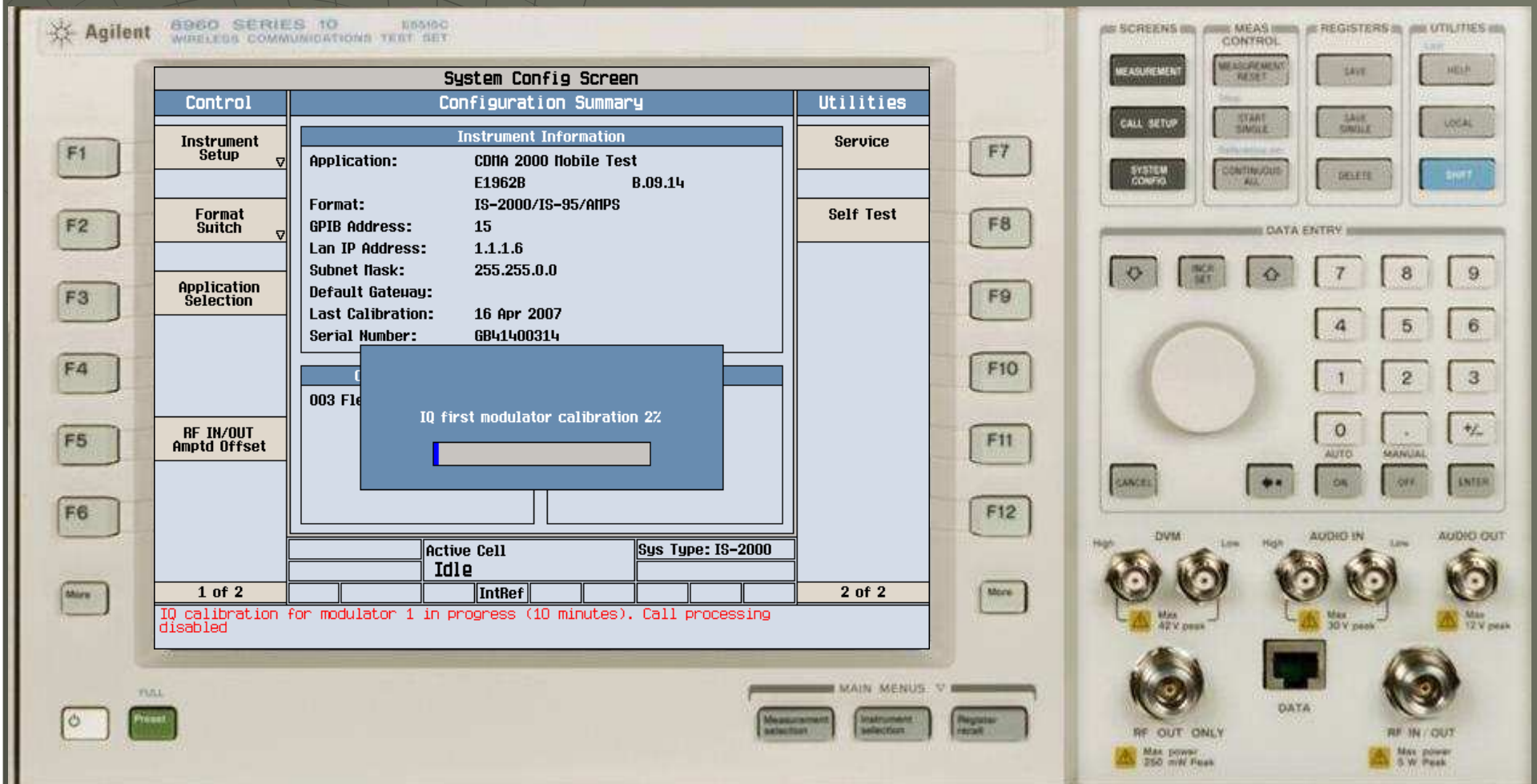
System Config



- 按下F7，选择“Cal.first IQ Modulator”，按下旋鈕



- ◆ 仪器进行IQ1自校准，请等待大约5分钟



- ◆ 出现如图所示对话框，IQ1自校准完成



- 再次按下F7， 并选择Cal.Burst Mod Offset1

Agilent 8960 SERIES 10 89510C WIRELESS COMMUNICATIONS TEST SET

System Config Screen

Control	Configuration Summary	Utilities
F1 Instrument Setup	Instrument Information Application: CDMA 2000 Mobile Test E1962B B.09.14 Format: IS-2000/IS-95/ANPS GPIB Address: 15 Lan IP Address: 1.1.1.6 Subnet Mask: 255.255.0.0 Default Gateway: Last Calibration: 16 Apr 2007 Serial Number: GB41400314	Service Self Test
F2 Format Switch	Options 003 Flexible R	Service Cal. first IQ Modulator Cal. Burst Mod Offset 1
F3 Application Selection	Response Status IA L event N	
F4	Active Cell Idle Sys Type: IS-2000	
F5 RF IN/OUT Amptd Offset	IntRef	
F6	1 of 2	2 of 2

MAIN MENU: v

MEASUREMENT selection INSTRUMENT selection REGISTER recall

SCREENS: MEASUREMENT, CALL SETUP, SYSTEM CONFIG

MEAS CONTROL: MEASUREMENT RESET, START SINGLE, CONTINUOUS ALL

REGISTERS: SAVE, SAVE SINGLE, DELETE

UTILITIES: HELP, LOCAL, Shift

DATA ENTRY: 7, 8, 9, 4, 5, 6, 1, 2, 3, 0, +/-, AUTO, MANUAL, OFF, ENTER, CANCEL, +/-

DVM: High, Low, Max 42V peak

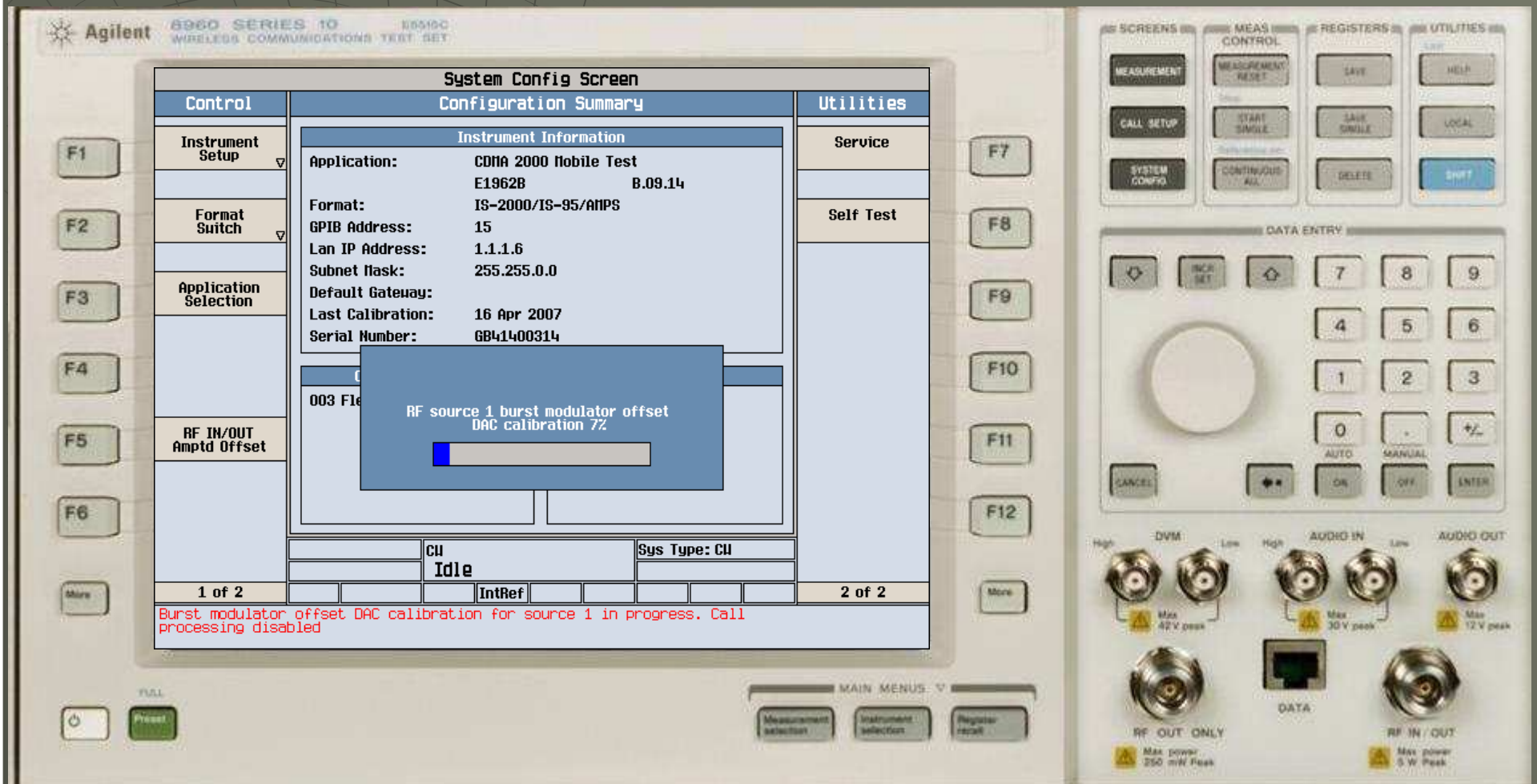
AUDIO IN: High, Low, Max 30V peak

AUDIO OUT: Max 12V peak

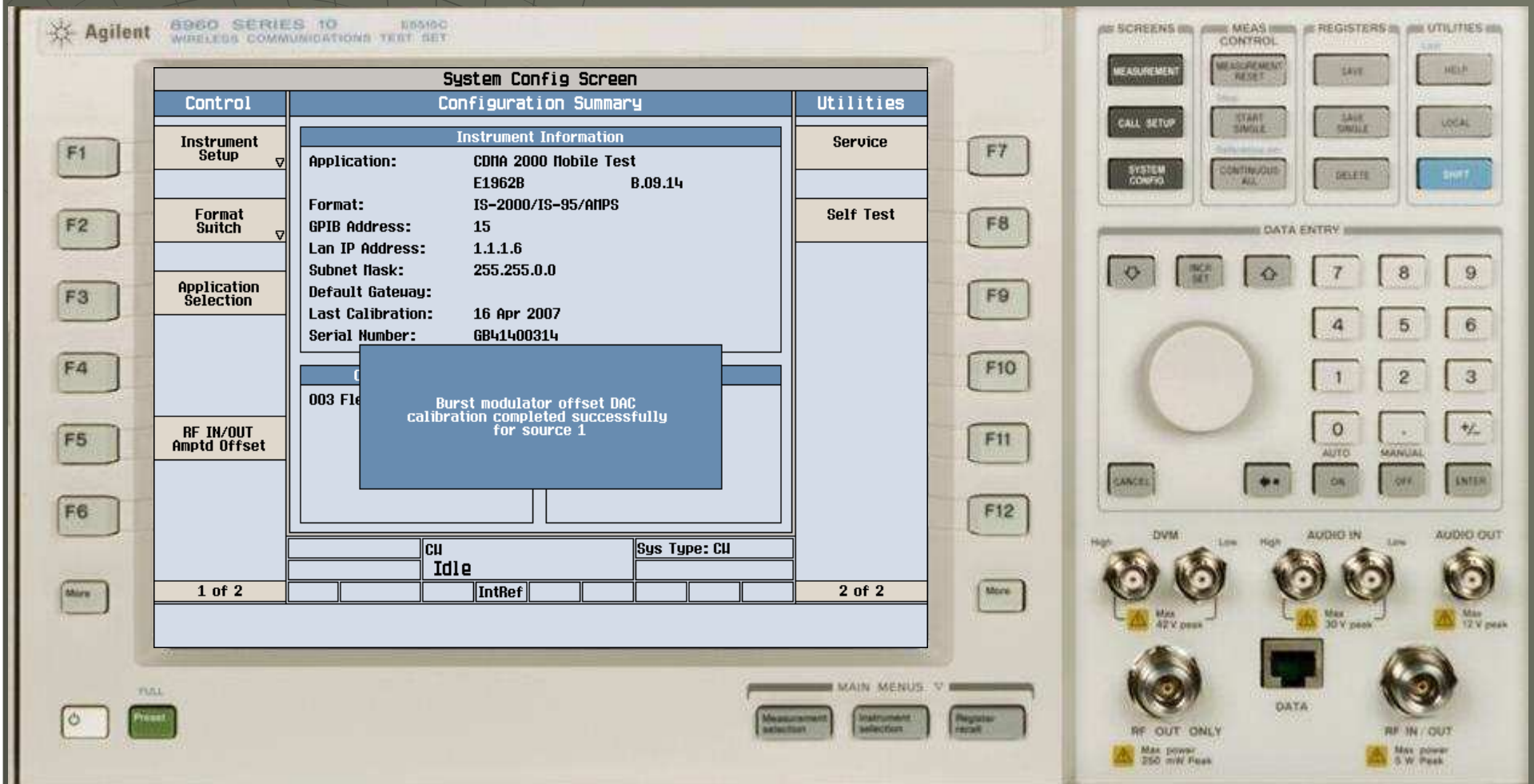
RF OUT ONLY: Max power 250 mW Peak

RF IN / OUT: Max power 5 W Peak

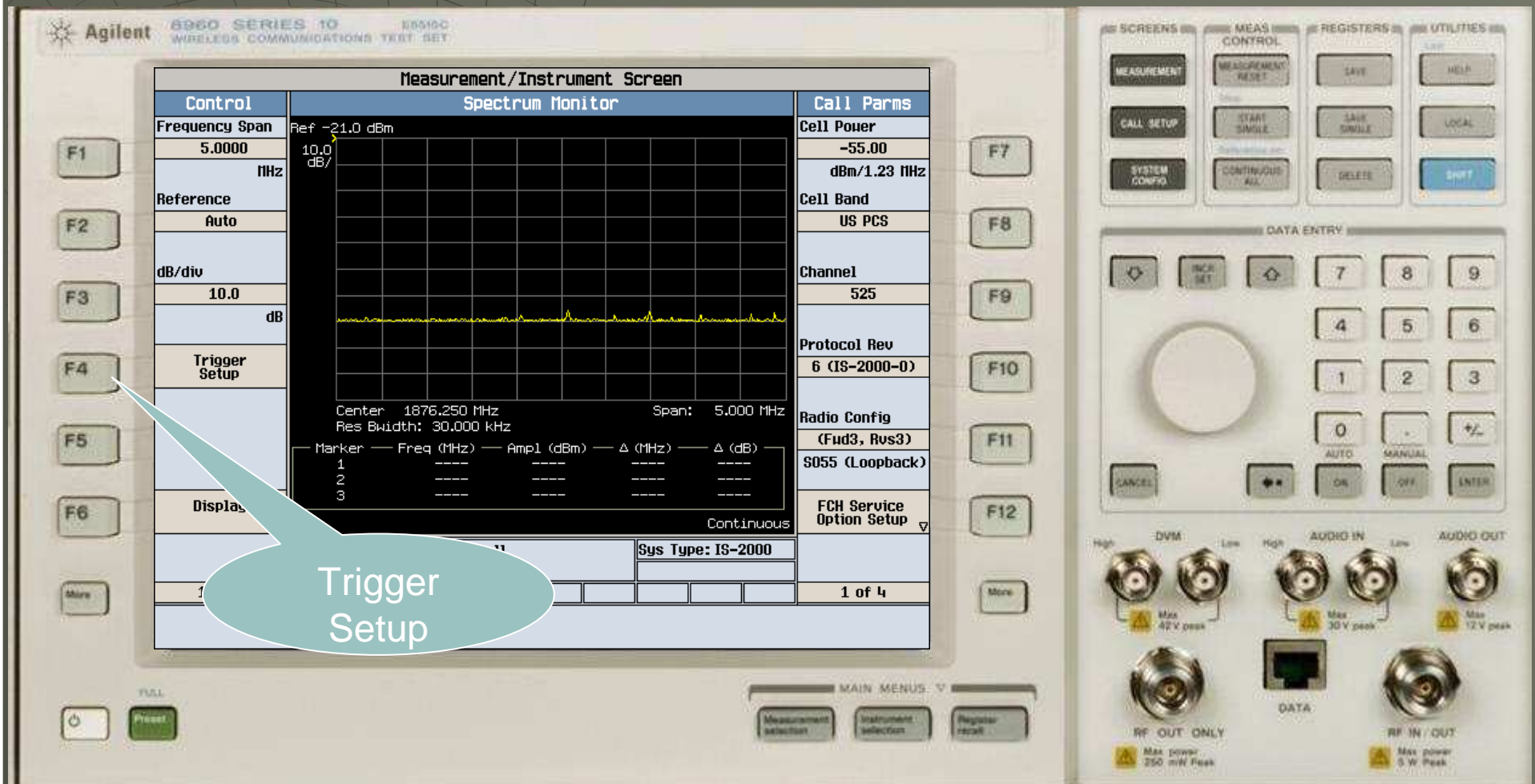
◆ 请等待大约1分钟



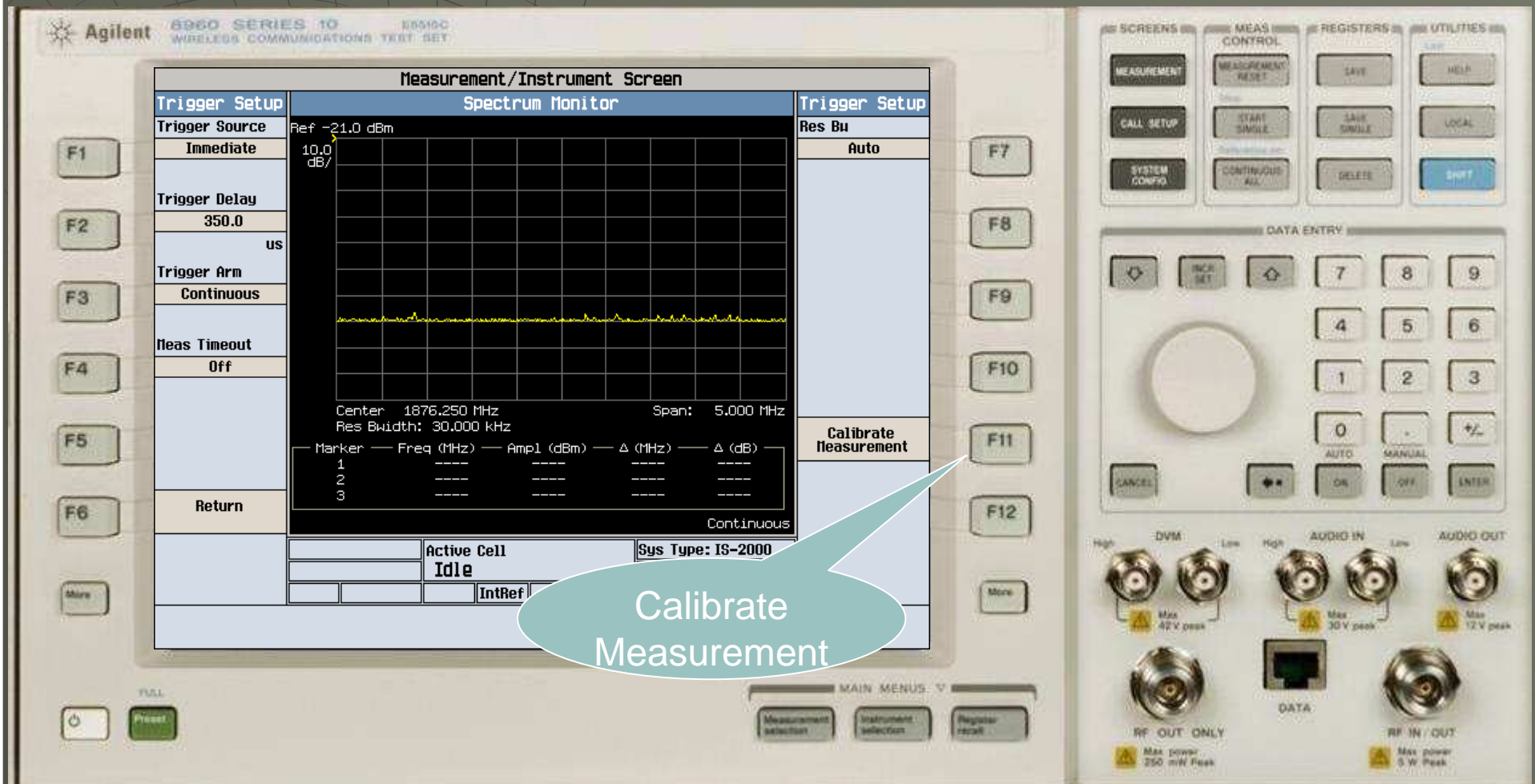
- ◆ 出现如图所示对话框，Burst自校准完成



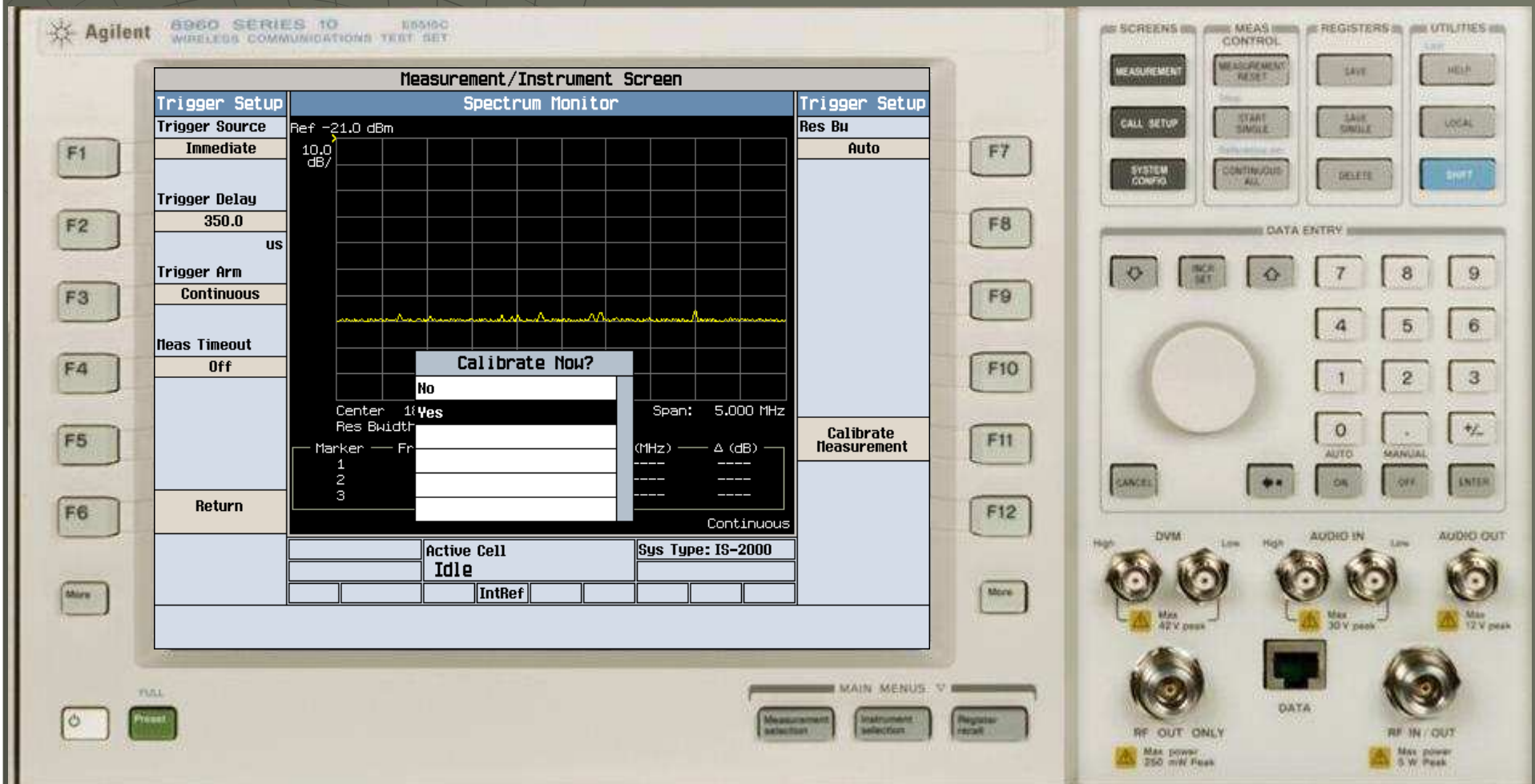
- ◆ 按下F4按钮，选择Trigger Setup



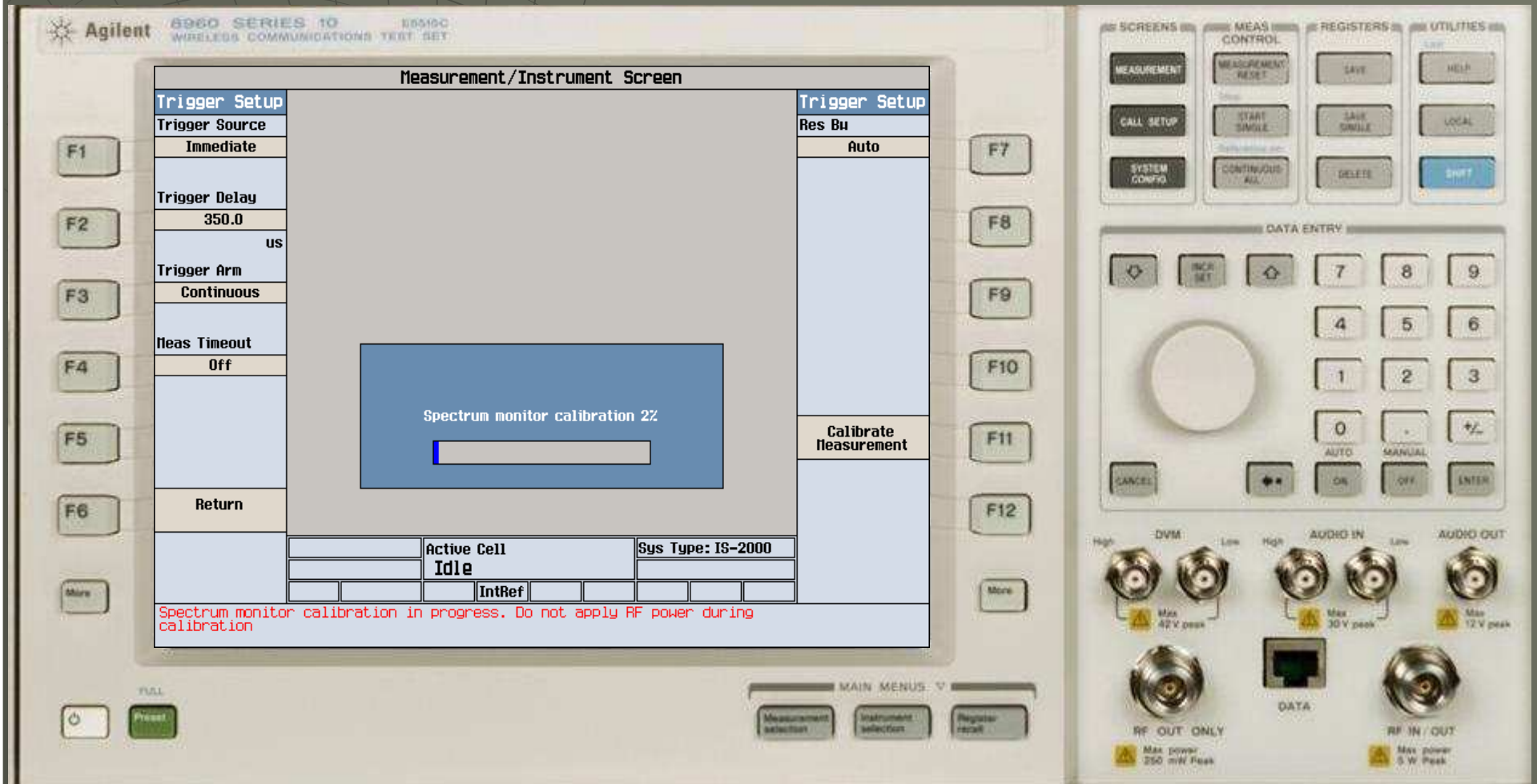
◆ 按下F11，选择Calibrate Measurement



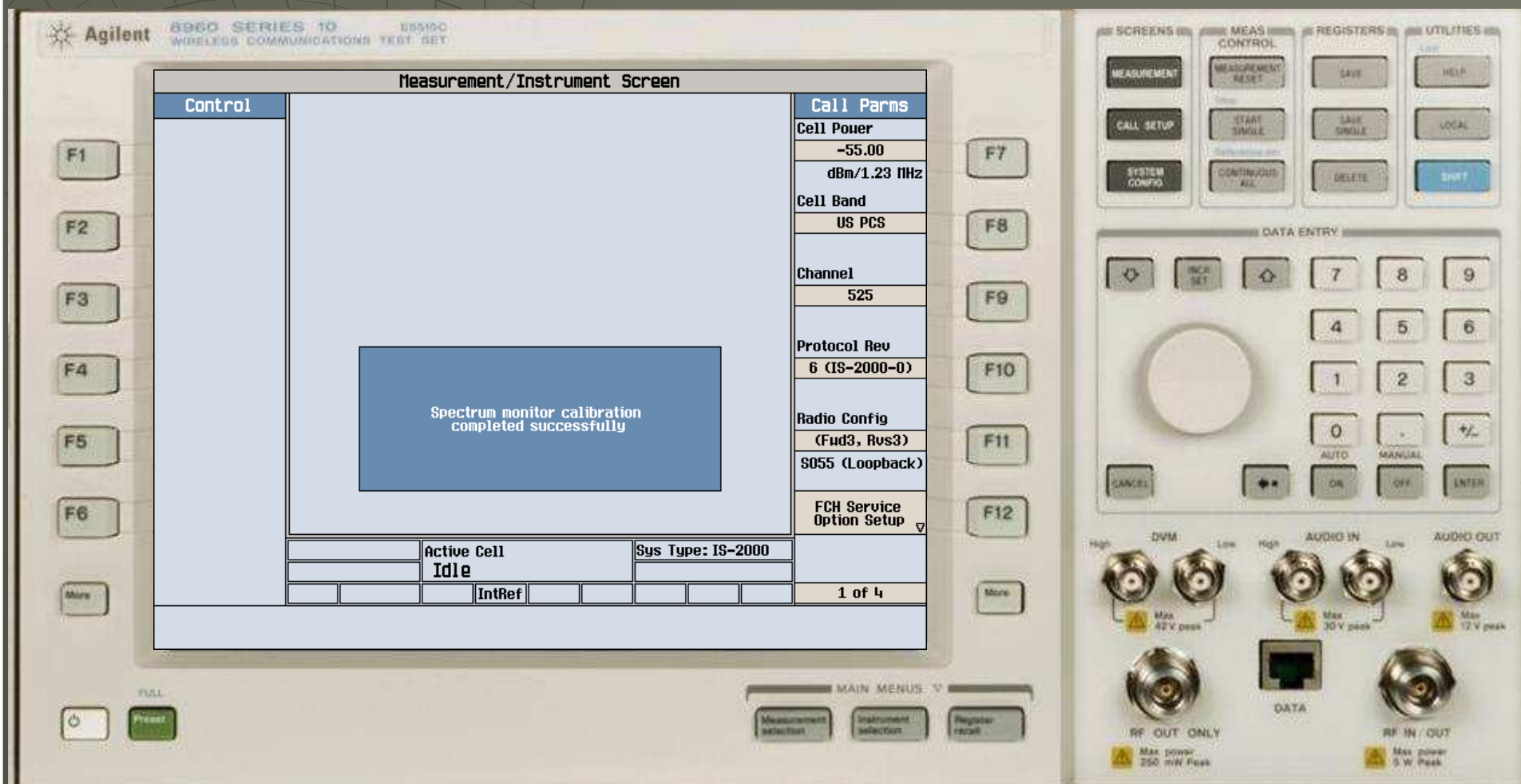
- ◆ 使用旋钮，选择Yes，并按下旋钮



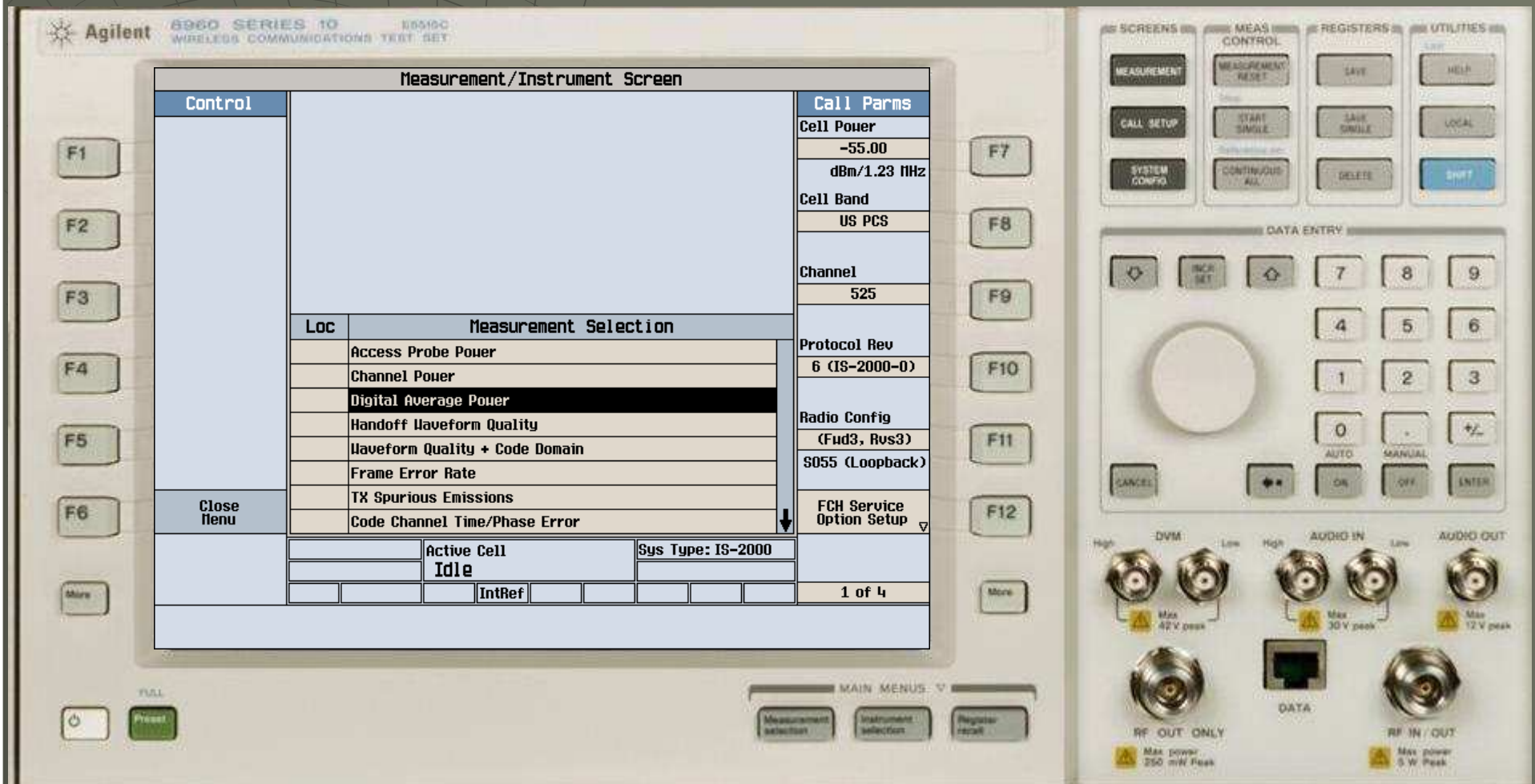
◆ 请等待2分钟



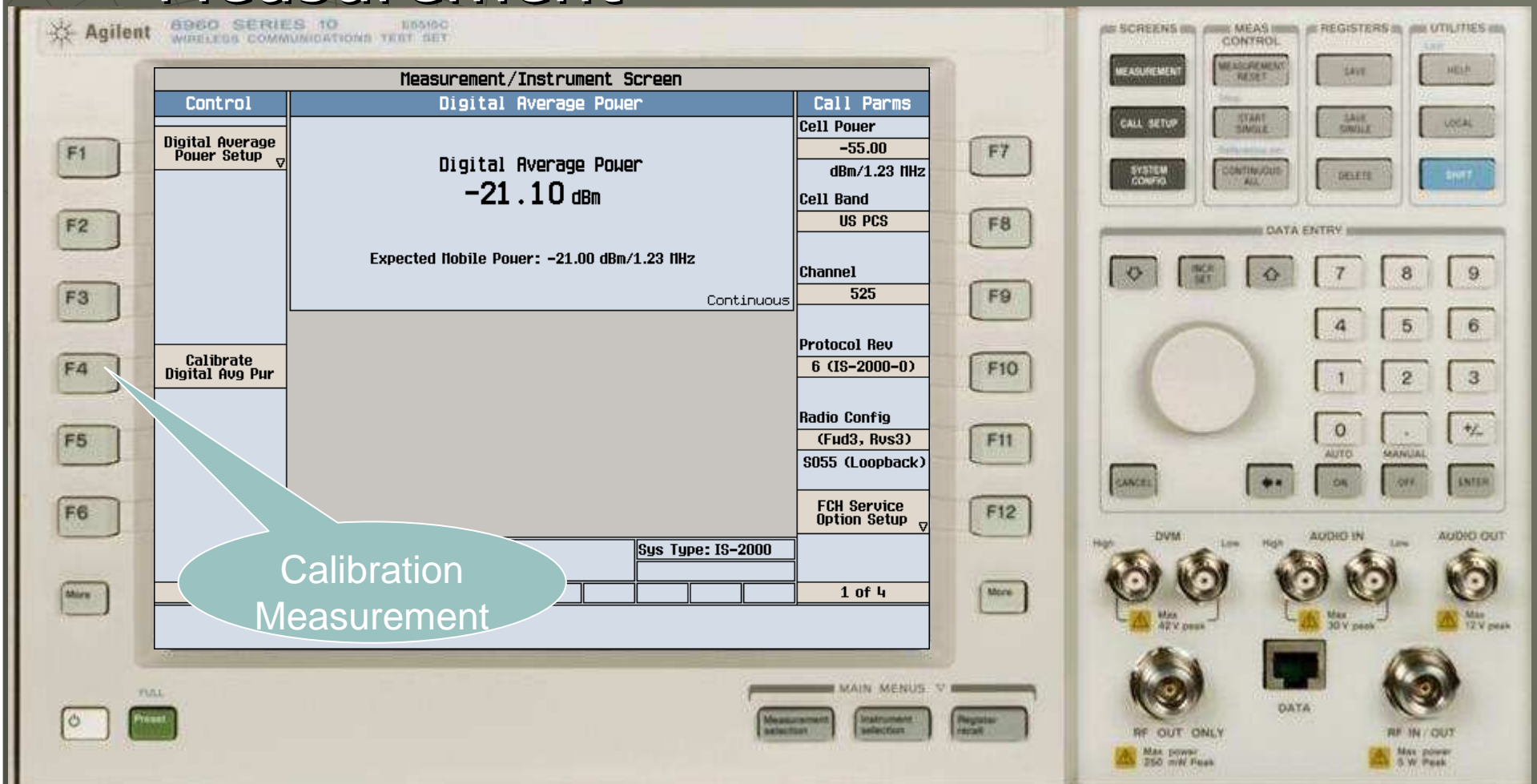
- ◆ 出现如图所示画面，Spectrum Monitor自校准完成



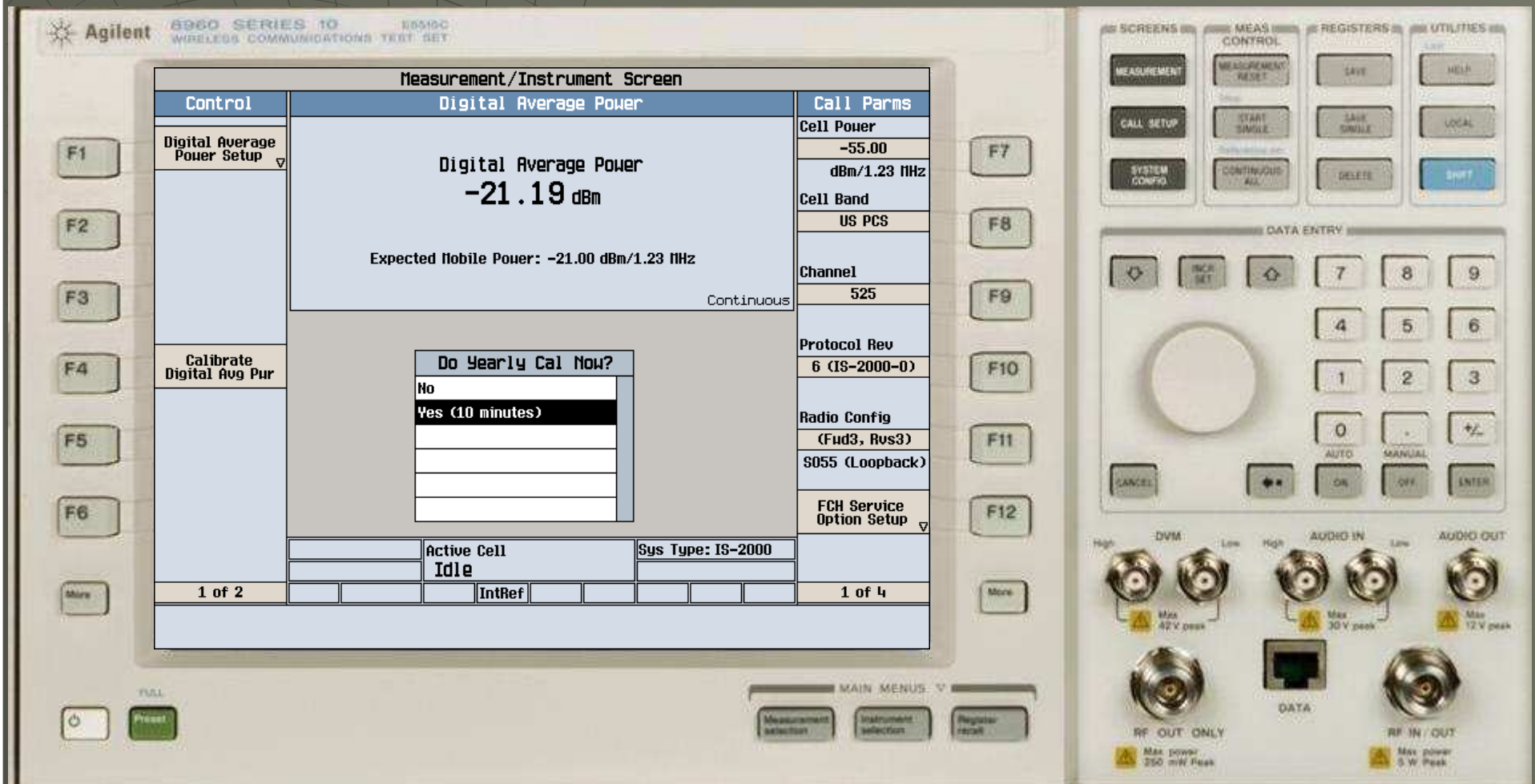
◆ 使用旋钮选择“Digital Average Power”



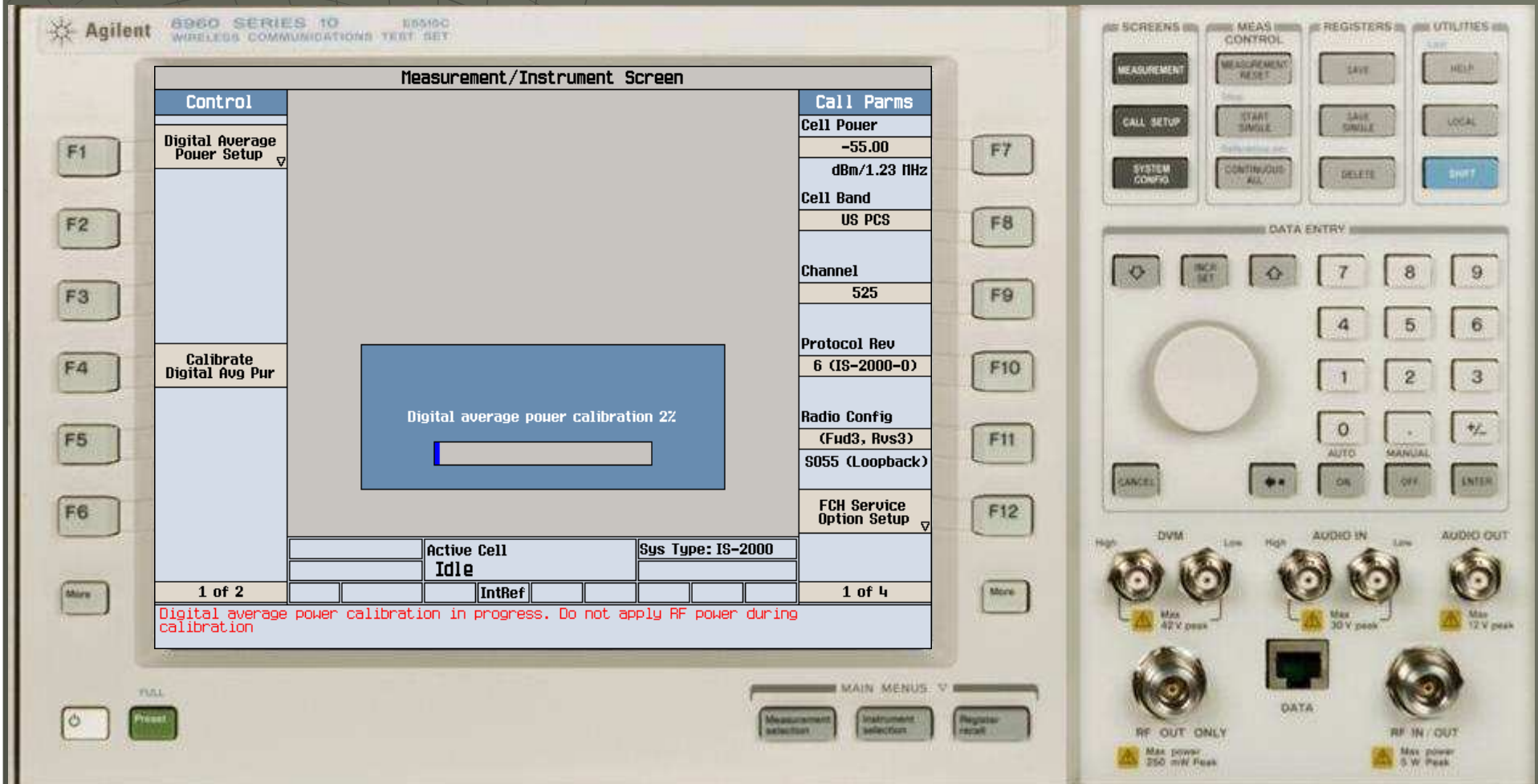
◆ 按下F4，选择“Calibration Measurement”



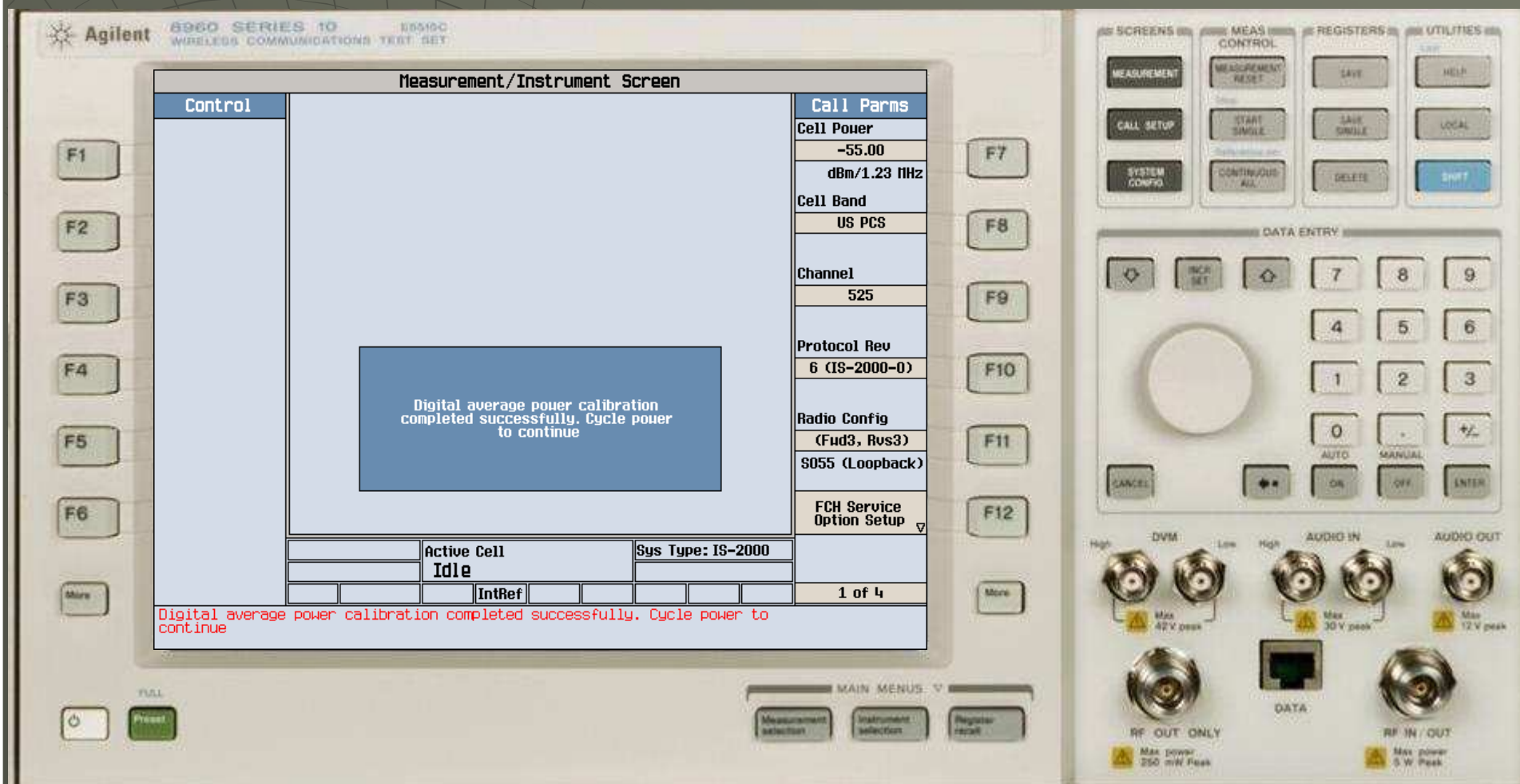
- ◆ 使用旋钮，选择Yes，并按下旋钮



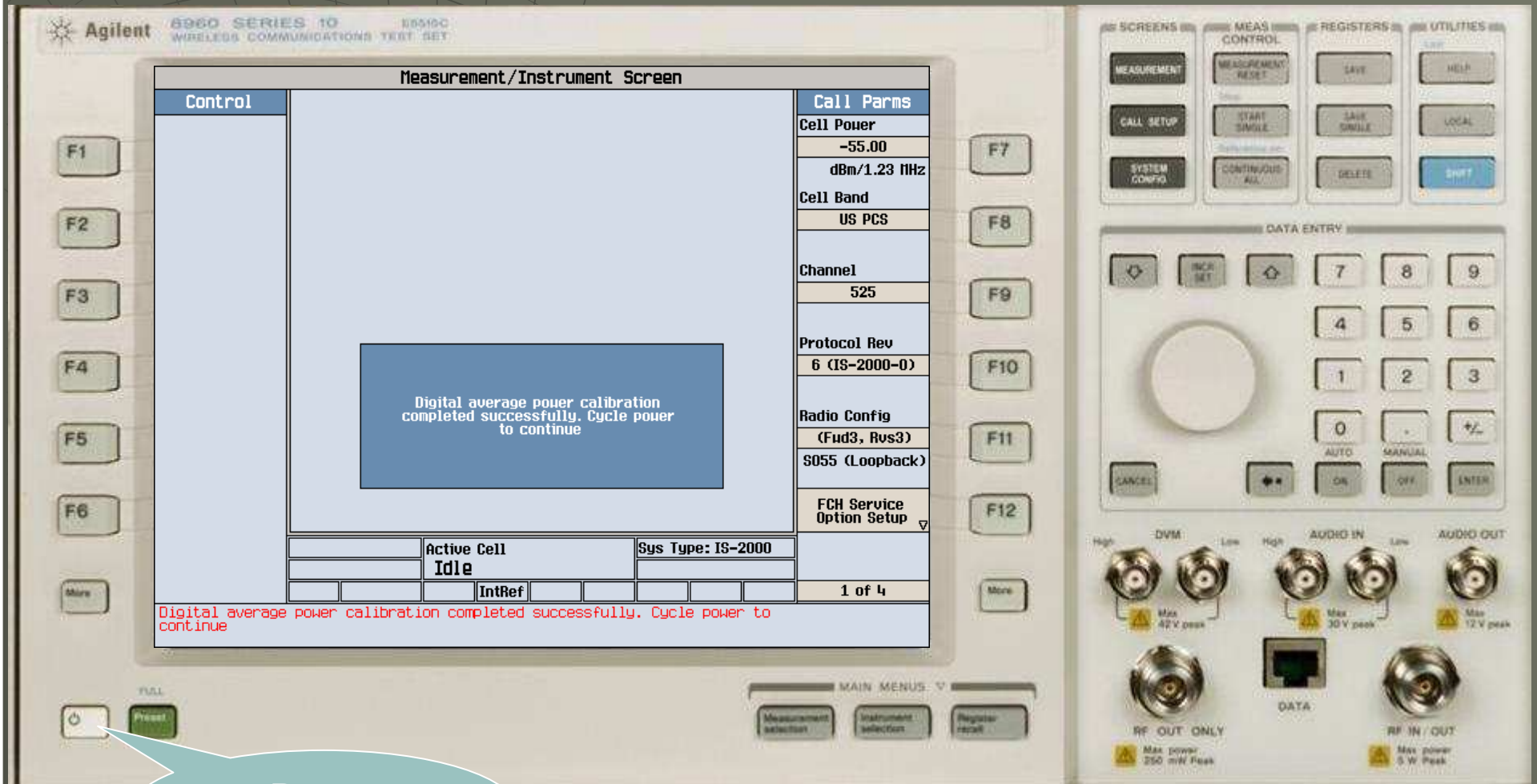
◆ 请等待大约10分钟



- ◆ 出现如图画面，Digital Average Power自校准完成

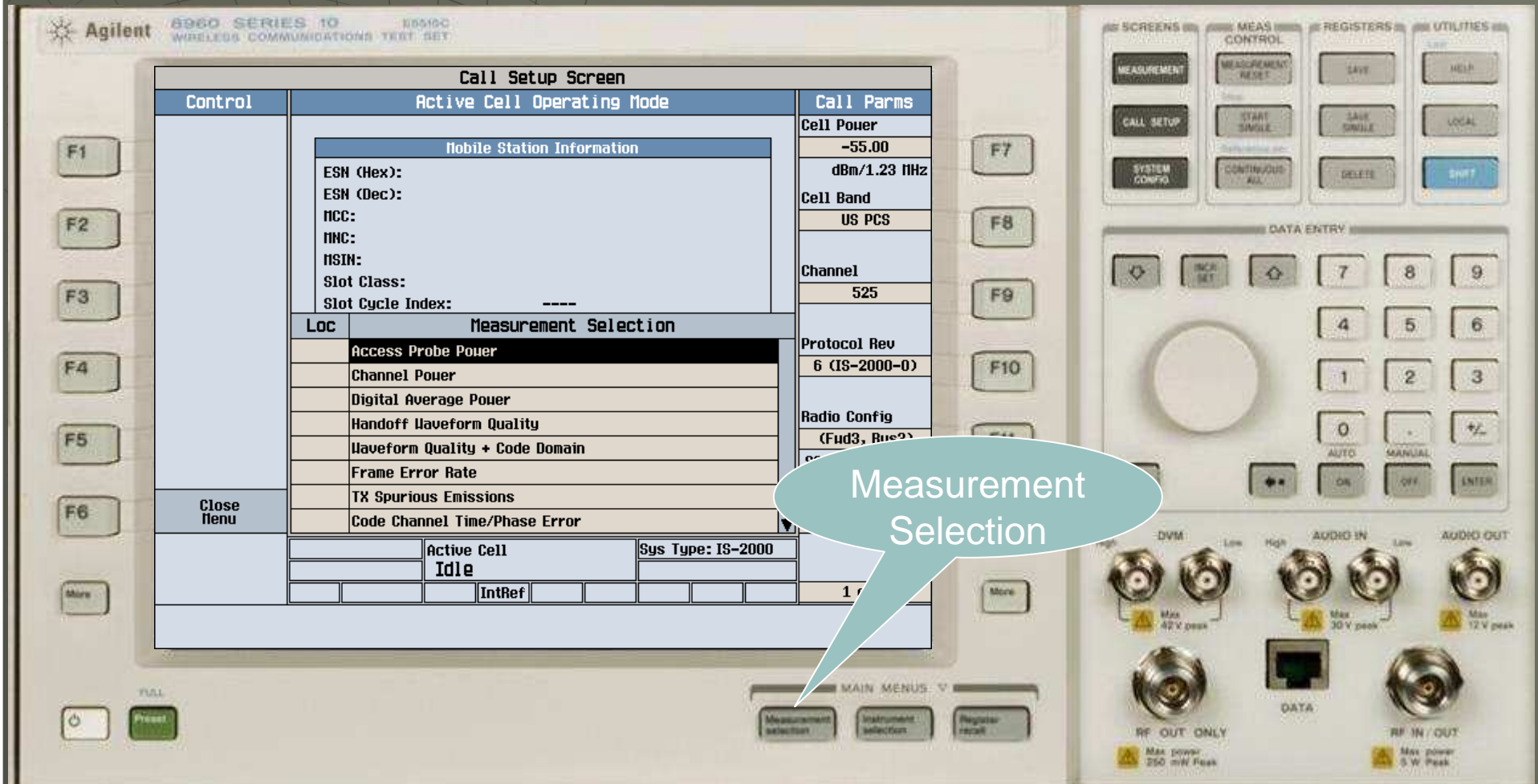


- ◆ 请使用电源开关按钮重新启动仪器

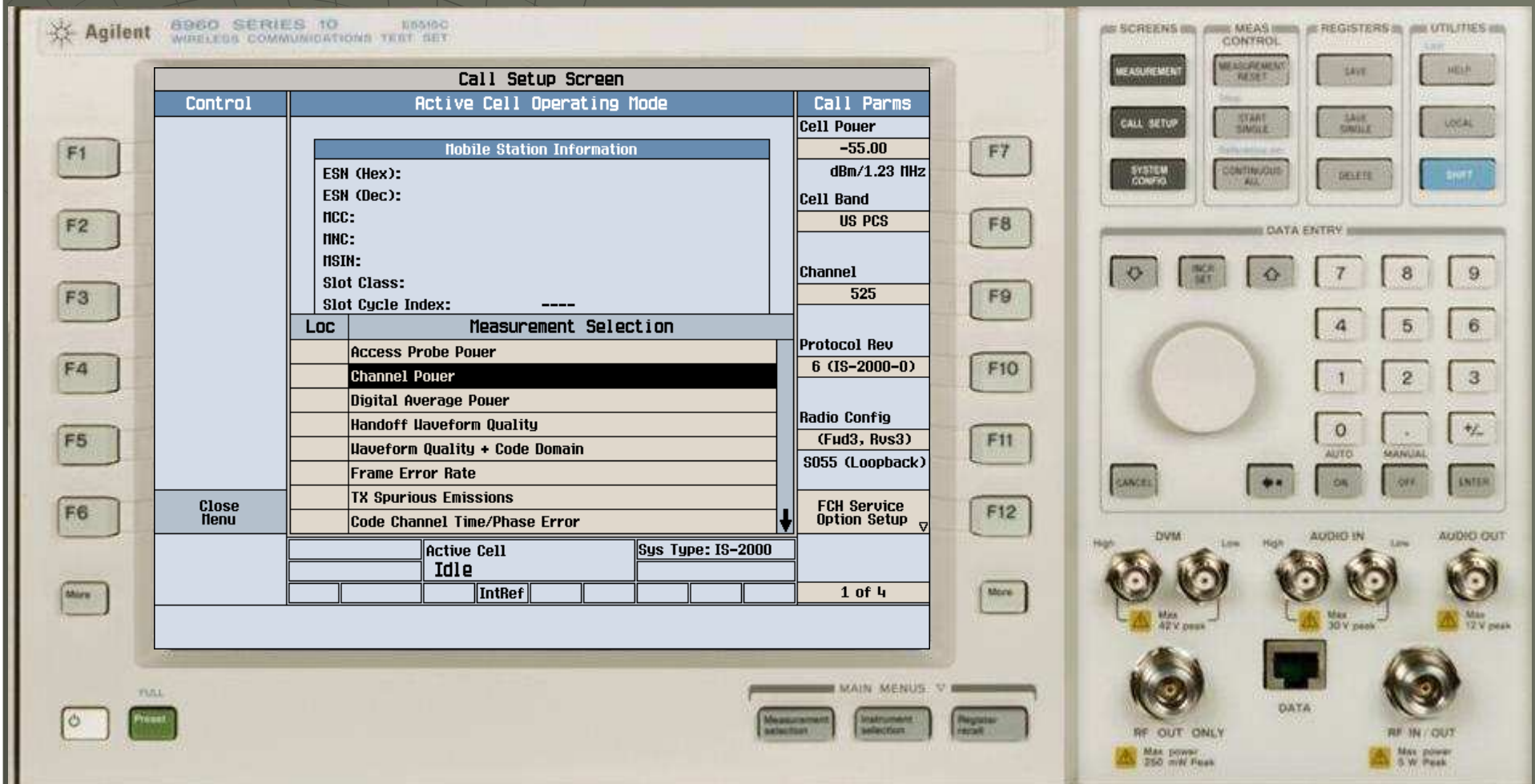


Power Button

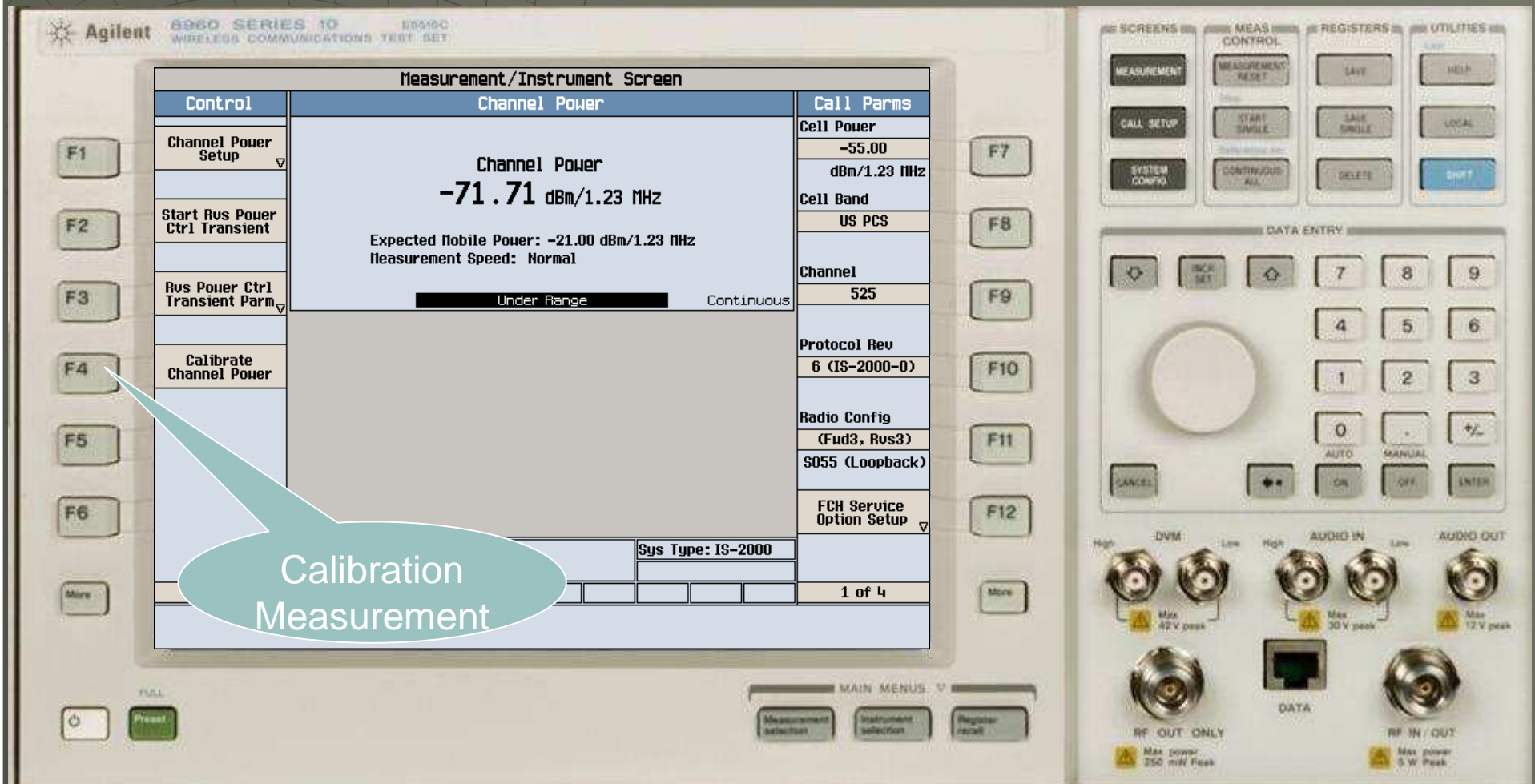
- 重新启动正常后，按下“Measurement Selection”按钮



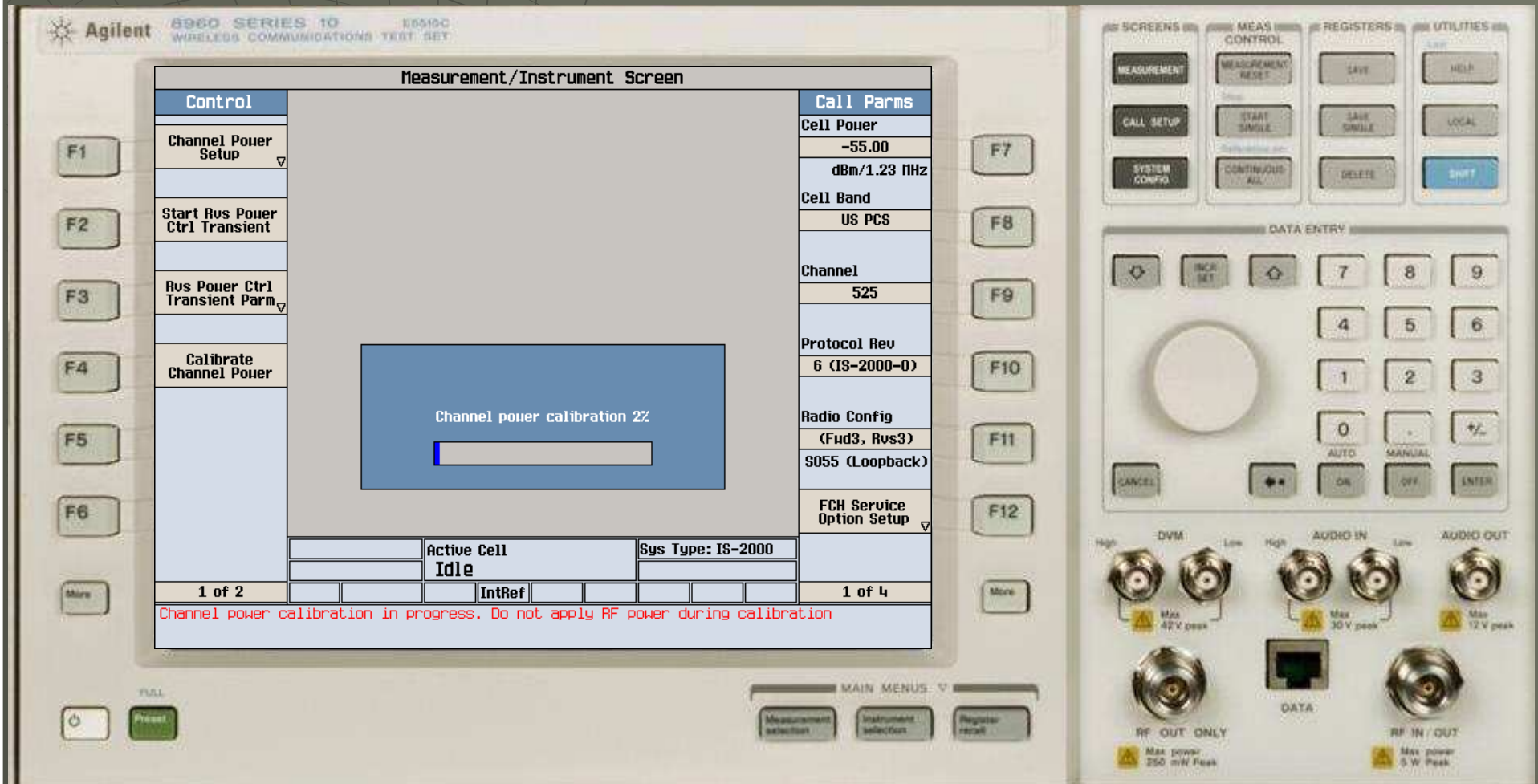
◆ 使用旋钮选择“Channel Power”



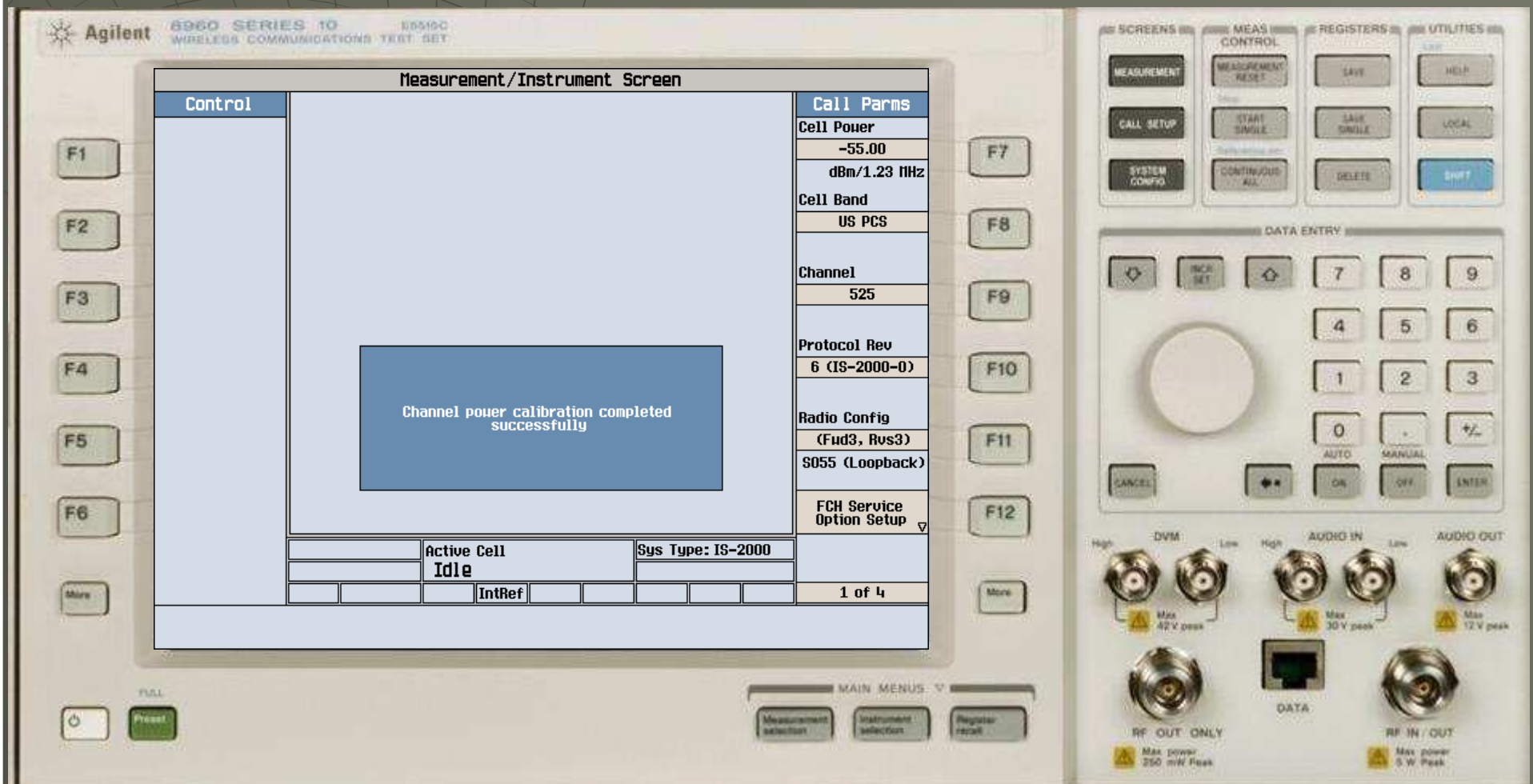
- ◆ 按下F4，选择“Calibration Measurement”



◆ 请等待2分钟



- ◆ 出现如图画面，Channel Power自校准完成



- ◆ 所有选择操作，请使用旋钮，按下旋钮即为确认。
- ◆ 如果有任何一项自校准出现“Fail”字样，请记录所进行的自校准名称，并报修。
- ◆ 所有自校准需要热机30分钟后再进行操作，否则可能不准，或者无效。
- ◆ 在自校准过程中请去除连接RF2口的电缆。
- ◆ 在自校准过程中不要运行任何测量程序。