

Single-Output 2000 W



6571A-6575A

- Front panel and analog control of output voltage and current
- Fast, low-noise outputs
- Fan-speed control to minimize acoustic noise
- Protection features to ensure DUT safety

This series of 2000 watt DC power supplies has the exceptional, proven reliability that test system engineers look for. It also has the unusual combination of high efficiency and low noise operation.

These DC power supplies can be controlled either from the front panel or via an analog programming voltage. When used in a test system, the fast up and down programming helps decrease test time. Quickly reacting protection features, including CV/CC mode crossover and over-voltage protection help protect your valuable assemblies from damage.

Lab-bench use is enhanced by the fan-speed control, which minimizes acoustic noise. The extremely low ripple and noise helps the test engineer make extremely accurate current and voltage measurements.

Specifications

(at 0° to 55° C unless otherwise specified)

		6571A	6572A	6573A	6574A	6575A	6571A-J03 Special Order Option
Number of outputs		1	1	1	1	1	1
GPIB		No	No	No	No	No	No
Output ratings							
Output voltage		0 to 8 V	0 to 20 V	0 to 35 V	0 to 60 V	0 to 120 V	14 V
Output current		0 to 220 A	0 to 100 A	0 to 60 A	0 to 35 A	0 to 18 A	150 A
Programming accuracy at 25°C ±5°C							
Voltage	0.04% +	8 mV	20 mV	35 mV	60 mV	120 mV	14 mV
Current	0.1% +	125 mA	60 mA	40 mA	25 mA	12 mA	90 mA
Ripple and noise from 20 Hz to 20 MHz							
Voltage rms		650 µV	750 µV	800 µV	1.25 mV	1.9 mV	1.5 mV
peak-peak		7 mV	9 mV	9 mV	11 mV	16 mV	15 mV
Current rms		200 mA	100 mA	40 mA	25 mA	12 mA	150 mA
Load regulation and line regulation							
Voltage	0.002%+	300 µV	650 µV	1.2 mV	2 mV	4 mV	600 µV
Current	0.005%+	10 mA	7 mA	4 mA	2 mA	1 mA	7 mA
Transient response time		Less than 900 µs for the output voltage to recover 100 mV following a change in load from 100% to 50% or 50% to 100% of the output current rating of the supply					
Supplemental Characteristics		(Non-warranted characteristics determined by design and useful in applying the product)					
Average resolution							
Voltage		2 mV	5 mV	9 mV	15 mV	30 mV	4 mV
Current		55 mA	25 mA	15 mA	8.75 mA	4.5 mA	40 mA
OVP		15 mV	35 mV	65 mV	100 mV	215 mV	28 mV
Output voltage programming response time*							
*Full load programming rise/fall time (10% to 90% or 90% to 10%) with full resistive load equal to rated output voltage/rated output current.		30 ms	60 ms	130 ms	130 ms	195 ms	30 ms

Single-Output: 2000 W (Continued)

Application Notes:

Agilent DC Power Supplies for Base Station Testing
5988-2386EN

10 Practical Tips You Need to Know About Your Power Products
5965-8239E

Supplemental Characteristics for all model numbers

DC Floating Voltage: Output terminals can be floated up to ±240 Vdc from chassis ground

Output Common-Mode Noise Current: (to signal ground binding post) 500 µA rms, 4 mA peak-to-peak

Remote Sensing: Up to half the rated output voltage can be dropped in each load lead. The drop in the load leads subtracts from the voltage available for the load.

Modulation: (Analog programming of output voltage and current)

Input Signal: 0 to -4 V for voltage, 0 to 7 V for current

Input Impedance: 30 k Ohm or greater

Input Power: 3,800 VA, 2,600 W at full load; 170 W at no load

Regulatory Compliance: Listed to UL1244; certified to CSA556B; conforms to IEC 61010-1.

Size: 425.5 mm W x 132.6 mm H x 640 mm D (16.75 in x 5.22 in x 25.2 in)

Weight: Net, 28.2 kg (62 lb); shipping, 31.8 kg (70 lb)

Warranty Period: One year

Specifications

(at 0° to 55° C unless otherwise specified)

		6571A-J04 Special Order Option	6571A-J17 Special Order Option	6573A-J03 Special Order Option	6573A-J08 Special Order Option	6574A-J03 Special Order Option	6574A-J07 Special Order Option
Number of outputs		1	1	1	1	1	1
 GPIB		No	No	No	No	No	No
Output ratings							
Output voltage		10 V	15 V	37.5V	40 V	56 V	50 V
Output current		200 A	120 A	45 A	50 A	38 A	42 A
Programming accuracy at 25°C ±5°C							
Voltage	0.04% +	10 mV	15 mV	37.5 mV	40 mV	60 mV	60 mV
Current	0.1% +	125 mA	90 mA	40 mA	35 mA	28 mA	30 mA
Ripple and noise from 20 Hz to 20 MHz							
Voltage rms		750 µV	1.5 mV	800 µV	1 mV	1.25 mV	1.25 mV
peak-peak		9 mV	15 mV	9 mV	10.5 mV	11 mV	11 mV
Current rms		200 mA	150 mA	40 mA	40 mA	28 mA	25 mA
Load regulation and line regulation							
Voltage	0.002%+	300 µV	650 µV	1.2 mV	1.4 mV	2 mV	2 mV
Current	0.005%+	10 mA	7 mA	4 mA	4 mA	2 mA	2 mA
Transient response time		Less than 900 µs for the output voltage to recover 100 mV following a change in load from response time 100% to 50% or 50% to 100% of the output current rating of the supply					
Supplemental Characteristics (Non-warranted characteristics determined by design and useful in applying the product)							
Average resolution							
Voltage		2.5 mV	4 mV	10 mV	10.5 mV	14 mV	12 mV
Current		55 mA	35 mA	15 mA	12.5 mA	9.5 mA	11 mA
OVP		20 mV	30 mV	65 mV	75 mV	100 mV	85 mV
Output voltage programming response time*							
*Full load programming rise/fall time (10% to 90% or 90% to 10%) with full resistive load equal to rated output voltage/rated output current.		35 ms	35 ms	130 ms	130 ms	130 ms	130 ms

Single-Output: 2000 W (Continued)

Ordering Information

Opt 200 174 to 220 Vac, 47 to 63 Hz (Japan only)

Opt 230 191 to 250 Vac, 47 to 63 Hz

* **Opt 908** Rack-mount Kit (p/n 5062-3977)

* **Opt 909** Rack-mount Kit w/ Handles (p/n 5063-9221)

Opt 0L1 Full documentation on CD-ROM, and printed standard documentation package

Opt 0L2 Extra copy of standard printed documentation package

Opt 0B0 Full documentation on CD-ROM only

Opt 0B3 Service Manual

A line cord option must be specified, see the AC line voltage and cord section.

* Support rails required

Accessories

p/n 1494-0059 Accessory Slide Kit

E3663AC Support rails for Agilent rack cabinets

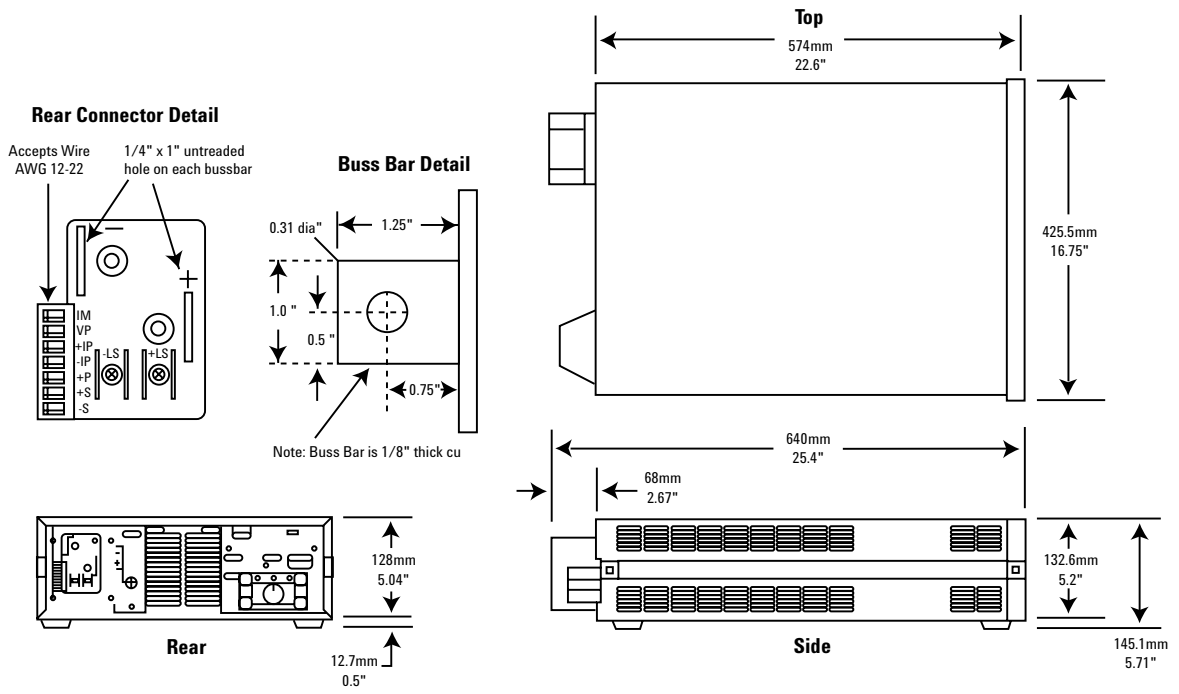
Specifications

(at 0° to 55° C unless otherwise specified)

	6575A-J04 Special Order Option	6575A-J06 Special Order Option	6575A-J07 Special Order Option	6575A-J08 Special Order Option	6575A-J09 Special Order Option	6575A-J11 Special Order Option
Number of outputs	1	1	1	1	1	1
GPIO	No	No	No	No	No	No
Output ratings						
Output voltage	160 V	135 V	200 V	100 V	110 V	150 V
Output current	13 A	16 A	11 A	22 A	20 A	15 A
Programming accuracy at 25°C ±5°C						
Voltage	0.04% +	160 mV	125 mV	200 mV	120 mV	150 mV
Current	0.1% +	10 mA	12 mA	8 mA	15 mA	11 mA
Ripple and noise from 20 Hz to 20 MHz						
Voltage rms	2.8 mV	2 mV	3.5 mV	1.9 mV	1.9 mV	2.5 mV
peak-peak	20 mV	18 mV	25 mV	16 mV	16 mV	18 mV
Current rms	18 mA	12 mA	15 mA	15 mA	13.5 mA	12 mA
Load regulation and line regulation						
Voltage	0.002%+	6 mV	4 mV	7 mV	4 mV	6 mV
Current	0.005%+	1 mA	4 mV	1 mA	4 mV	1 mA
Transient response time	Less than 900 µs for the output voltage to recover 100 mV following a change in load from response time 100% to 50% or 50% to 100% of the output current rating of the supply					
Supplemental Characteristics (Non-warranted characteristics determined by design and useful in applying the product)						
Average resolution						
Voltage	40 mV	34 mV	50 mV	30 mV	30 mV	37.5 mV
Current	3.25 mA	4 mA	2.75 mA	4.5 mA	4.5 mA	3.75 mA
OVP	300 mV	242 mV	360 mV	215 mV	215 mV	270 mV
Output voltage programming response time*						
*Full load programming rise/fall time (10% to 90% or 90% to 10%) with full resistive load equal to rated output voltage/rated output current.	280 ms	250 ms	350 ms	195 ms	195 ms	250 ms

Single-Output: 2000 W (Continued)

Agilent Models: 6571A, 6572A, 6573A, 6574A, 6575A



**Your Requested Excerpt from the
Agilent System and Bench Instruments Catalog 2006**

The preceding page(s) are an excerpt from the 2006 System and Bench Instruments Catalog. We hope that these pages supply the information that you currently need. If you would like to have further information about the extensive selection of Agilent DC power supplies, please visit www.agilent.com/find/power to print a copy of the complete catalog, or to request that a copy be sent to you. You will also find a lot of other useful information on this Web site.

In the full System and Bench Instruments Catalog, you will find that Agilent offers much more than DC power supplies. This catalog contains detailed technical and application information on digital multimeters, DC power supplies, arbitrary waveform generators, and many more instruments. If you need basic, clean, power for your lab bench, it's there. In each power product category we have also integrated the capabilities you need for a complete power solution, including extensive measurement and analysis capabilities.

Please give us a call at your local Agilent Technologies sales office, or call a regional office listed, for assistance in choosing or using Agilent power products.

Keep up to date with Agilent's Test and Measurement Email Updates

As an Email Update subscriber, you will receive periodic customized email updates that match the areas of interest that you have specified. Your update will include products and services, applications and support information, events and promotions. Sign up today at www.agilent.com/find/emailupdates. Check off DC power supplies, AC power sources or electronic loads on your registration form, and we will promptly let you know what's new in power products. Our Privacy Statement at www.agilent.com/go/privacy describes our commitment to you regarding your privacy.

www.agilent.com

For more information on Agilent Technologies' products, applications or services, please contact your local Agilent office. The complete list is available at:

www.agilent.com/find/contactus

Phone or Fax

United States:

(tel) 800 829 4444

(fax) 800 829 4433

Canada:

(tel) 877 894 4414

(fax) 800 746 4866

China:

(tel) 800 810 0189

(fax) 800 820 2816

Europe:

(tel) 31 20 547 2111

Japan:

(tel) (81) 426 56 7832

(fax) (81) 426 56 7840

Korea:

(tel) (080) 769 0800

(fax) (080) 769 0900

Latin America:

(tel) (305) 269 7500

Taiwan:

(tel) 0800 047 866

(fax) 0800 286 331

Other Asia Pacific Countries:

(tel) (65) 6375 8100

(fax) (65) 6755 0042

Email: tm_ap@agilent.com

Contacts revised: 09/26/05

Product specifications and descriptions in this document subject to change without notice.

© Agilent Technologies, Inc. 2006
Printed in the USA, February 8, 2006